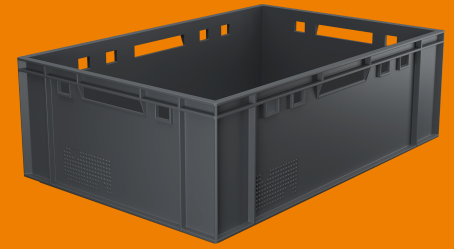


MEAT CRATE

E2



Art. no. 261-34513000

WERIT meat crates are standardised transport containers for the meat and sausage processing industry and retail, and comply with DIN 55423.

Special features

- Suitable for manual handling and automatic conveying technology
- Impact resistant, break-proof and dimensionally stable
- Easy to clean thanks to smooth surfaces
- Suitable for automatic washing systems
- Side opening for filling the goods
- Made of HDPE (3271 from PP)
- Guaranteed food-safe
- 100% recyclable

External dimensions	600 x 400 x 200 mm	Packaging	40 Pcs. per palette
Internal dimensions	565 x 365 x 195 mm	Colour	grey
Volumes	40 l	Version	Bottom closed, Sides, closed, 4 handle openings
Weight	2 kg	Accessories	Meat crates removable lid, Roller truck, Euro pallet
Material	HDPE		

Notice

All dimensions, weights and technical data listed in the catalogue are reference values. They do not represent any binding assurance of certain properties or the suitability for certain uses. Tolerances based on technical specifications according to DIN standards. Amendments and corrections are subject to change.

The details are based on our current technical knowledge and experience. Due to the abundance of possible influences during the use of the product that are outside our control, the user is not released from making their own inspections and tests.

A legally binding assurance of certain properties as well as the suitability for a specific application cannot be derived explicitly or implicitly.

If necessary, property rights must be observed.