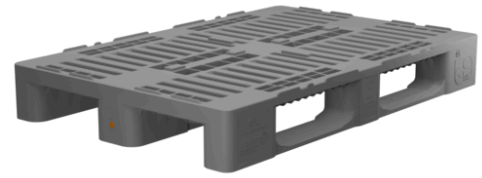


EURO PALLET

EURO H1



Art. no. 350-000000004

Use I Requirement

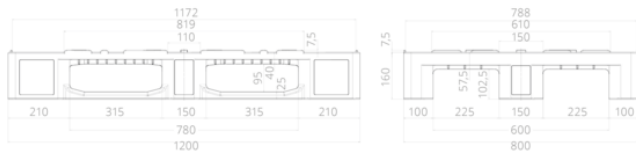
The EURO H1 pallet has been the leading hygiene pallet for years. It is used in all areas of industry and retail where high hygiene standards are required.

Special features

- Awarded with the GS label for tested safety
- DIN-plus certified
- According to the GS1 requirements profile
- The basis for all conventional container systems
- Compatible with half pallet H2 and E-container systems
- Excellent cleaning properties
- Dimensionally stable from -40°C to +70°C

Note:

hot imprinting of fonts, logos and numbers are possible on request depending on the quantity.



External dimensions 1200 x 800 x 160 mm

Weight 18 kg

Material HDPE

Colour grey

Anti-slip edge 7 mm

Skids 3 welded

Load capacity (static) 5000 kg

Load capacity (dynamic) 1250 kg

Load capacity (high bay) 1000 kg

Container loading quantity

20' container 192

40' container 390

40' container High Cube 440

Truck loading quantity

Trailer 612

Jumbo 684

Notice

All dimensions, weights and technical data listed in the catalogue are reference values. They do not represent any binding assurance of certain properties or the suitability for certain uses. Tolerances based on technical specifications according to DIN standards. Amendments and corrections are subject to change.

The details are based on our current technical knowledge and experience. Due to the abundance of possible influences during the use of the product that are outside our control, the user is not released from making their own inspections and tests.

A legally binding assurance of certain properties as well as the suitability for a specific application cannot be derived explicitly or implicitly.

If necessary, property rights must be observed.