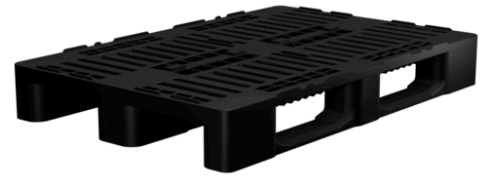


EURO PALLET

H1-R



Art. no. 352-000000010

Use I Requirement

The H1-R product range is manufactured from single-origin HDPE reclaim material. The pallets are robust, dimensionally stable and safe, ideal for high loading capacities. Particularly suitable for use in the non-food sector. By using the H1-R recycling pallet, you can save time and costs and thereby achieve maximum cost-effectiveness and efficiency in terms of your logistics.

Special features

- Made from single-origin HDPE reclaim material
- Dimensionally stable from -30°C to +60°C
- Optionally with locking device and / or with an
- 11 mm anti-slip edge (special design), making it particularly suitable for transporting KLT containers
- Optionally with welded skids

Options

- Optional with center locking mechanism and/or with an 11 mm anti-slip edge (special version), particularly suitable for transporting KLT containers
- Optional with welded skids

Note:

hot imprinting of fonts, logos and numbers are possible on request depending on the quantity.

External dimensions 1200 x 800 x 160 mm

Weight 16 kg

Material HDPE PE reclaim

Colour black

Anti-slip edge 7 mm

Skids 3 not welded

Load capacity (static) 4000 kg

Load capacity (dynamic) 1000 kg

Container loading quantity

20' container 192

40' container 390

40' container High Cube 440

Truck loading quantity

Trailer 612

Jumbo 684



Notice

All dimensions, weights and technical data listed in the catalogue are reference values. They do not represent any binding assurance of certain properties or the suitability for certain uses. Tolerances based on technical specifications according to DIN standards. Amendments and corrections are subject to change.

The details are based on our current technical knowledge and experience. Due to the abundance of possible influences during the use of the product that are outside our control, the user is not released from making their own inspections and tests.

A legally binding assurance of certain properties as well as the suitability for a specific application cannot be derived explicitly or implicitly.

If necessary, property rights must be observed.