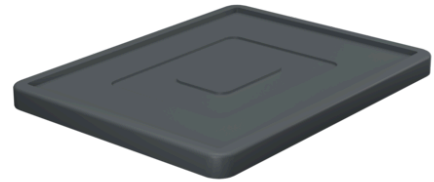


## SLIP LID CURVED LIPS



**Art. no. 333-000000013**

The perfect choice for the food industry and wherever hygiene and quick cleaning are essential.

### Key features

- Easy to clean thanks to smooth surfaces and
- rounded container design
- Resistant to acids and alkalis
- Resistant to extreme temperatures

**External dimensions** 400 x 300 mm

**Weight** 0.5 kg

**Material** HDPE

**Packaging** 32 Pcs. per Carton

**Colour** grey

**Accessories** Slip lid curved lips

### Notice

All dimensions, weights and technical data listed in the catalogue are reference values. They do not represent any binding assurance of certain properties or the suitability for certain uses. Tolerances based on technical specifications according to DIN standards. Amendments and corrections are subject to change.

The details are based on our current technical knowledge and experience. Due to the abundance of possible influences during the use of the product that are outside our control, the user is not released from making their own inspections and tests.

A legally binding assurance of certain properties as well as the suitability for a specific application cannot be derived explicitly or implicitly.

If necessary, property rights must be observed.