



# Packaging Technology



IBC, Reusable transport packaging  
and plastic pallets



# Table of contents

## Intermediate Bulk Container(IBC)

General Information	8
ECOLine – Standard (Non-UN)	15
TOPLine – UN approved	16
POLYex – Explosion-proof certification	17
BLUEline – including dispensing systems	18
NUTRiline – Food-safe	19
PROTECLine – with built-in UV protection	22
COMPACTline – 300-Litre-IBC	23
RECOLine – Reconditioned IBCs	24
Accessories	26

## Reusable transport packaging

Automation container	34
Euro Standard Stacking Boxes	38
Stackable boxes with U-shaped edges	46
Rotary stacking container	48
Trays and stacking boxes	54
Meat boxes	58
Round containers and barrels	60
Large containers	62
Customizations	64

## Plastic pallets

General Information	68
Half-pallets   800 x 600 mm	72
Euro pallets 1200 x 800 mm	74
Industrial pallets 1200 x 1000 mm	84

## Further information

Chemical resistance	92
Miscellaneous Information	94

## ▼ WERIT – We are it!

Innovative strength based on tradition

For over 75 years, WERIT Kunststoffwerke has stood for quality, reliability and progress in plastics processing. As a family-run company with locations across Europe, we combine traditional values with modern technology. Our products – from industrial and logistics solutions to sophisticated sanitary systems – are created from a deep understanding of our customers' needs and a clear goal: to create sustainable, durable solutions that really impress in everyday use.

With a strong focus on resource efficiency, the circular economy, and continuous innovation, WERIT develops customized plastic products that set benchmarks in functionality, safety, and environmental sustainability. Our employees – committed, competent and forward-looking – are at the heart of our success.

WERIT – quality that inspires confidence.  
Solutions that think ahead.

## ▼ We're focused

We are partners for pioneering solutions

Flexibility and delivery reliability characterise our daily activities. In close cooperation with our customers, we develop solutions that are precisely tailored to specific applications – precise, well thought-out and future-proof.

Our unique selling points stem from a clear brand essence: consistent customer focus, technological expertise and the courage to actively

shape demanding markets. Through strategic diversification, we not only secure our future but also create sustainable value—for our customers, for the market, and for our company.

# ▼ Quality that secures your competitive edge.

Quality management – more than just a seal

For WERIT, quality is the key to measurable added value. Our customers' requirements set our standards—and thus the performance of our products. Thanks to our Europe-wide certified quality management system, we guarantee consistently high process and product quality that you can rely on at all times.

For you, this means maximum reliability, maximum safety and efficient processes, regardless of which of our locations you produce or are supplied from. WERIT quality ensures predictable results – and thus directly strengthens your competitiveness.

For long-term efficiency gains in resource use:

WERIT Kunststoffwerke, with its German locations

in Altenkirchen and Buchholz, has been certified according to the ISO 50001 energy management system since 21 August 2014.

Verified quality – implemented responsibly

In addition to the highest quality standards, WERIT is committed to a clear code of conduct that ensures responsible procurement, fair business practices and sustainable action. For our customers, this means maximum security – technically, economically and ethically.

## Management and shareholders



Jörg Schneider



Ekkehard Schneider



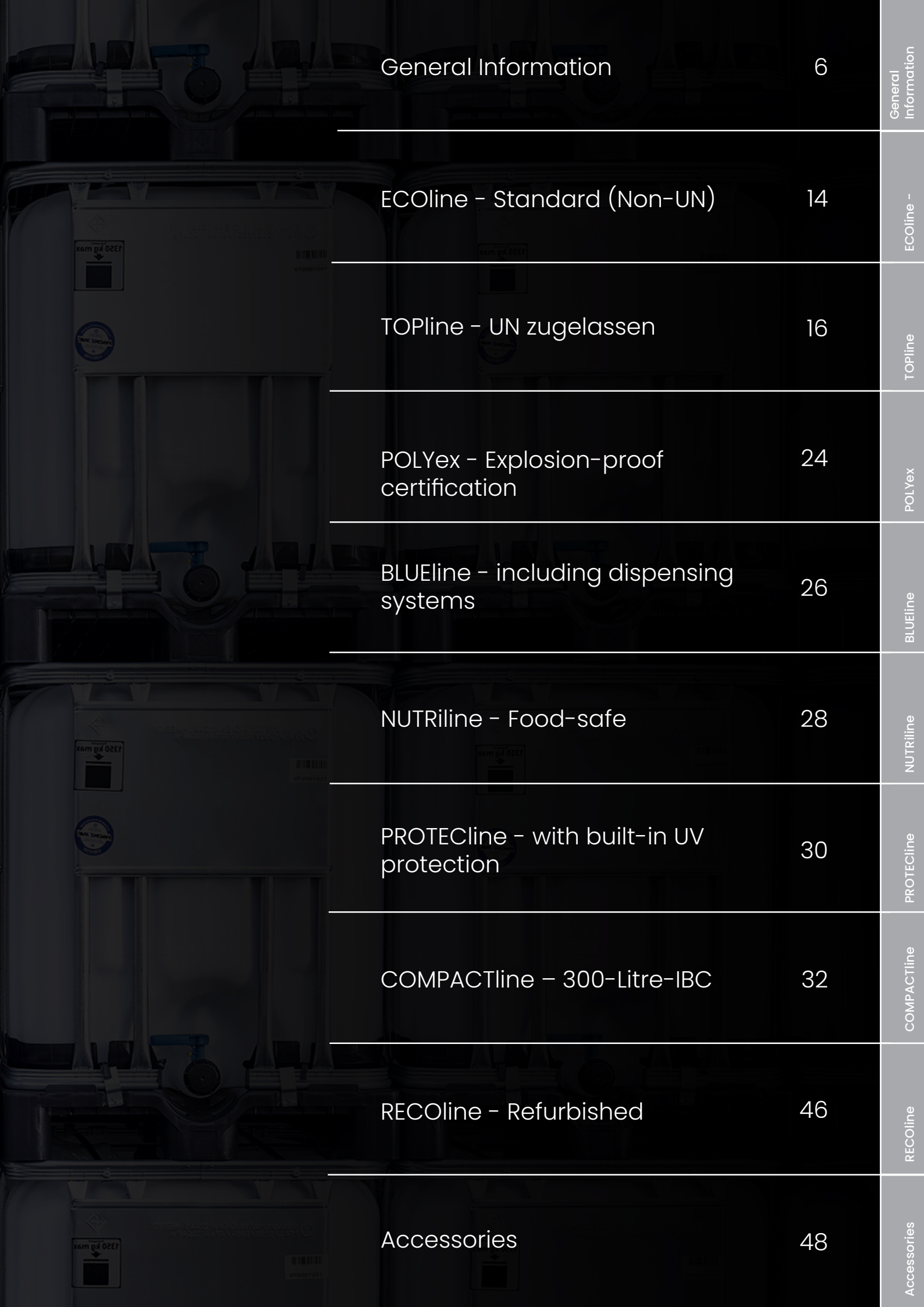
Marian Weger



Kerstin Dorn



# Intermediate Bulk Container (IBC)



General Information	6	General Information
ECOLine - Standard (Non-UN)	14	ECOLine -
TOPline - UN zugelassen	16	TOPline
POLYex - Explosion-proof certification	24	POLYex
BLUEline - including dispensing systems	26	BLUEline
NUTRiline - Food-safe	28	NUTRiline
PROTECLine - with built-in UV protection	30	PROTECLine
COMPACTline - 300-Litre-IBC	32	COMPACTline
RECOLine - Refurbished	46	RECOLine
Accessories	48	Accessories



## Intermediate Bulk Container

We offer a wide range of modular IBC containers in various sizes and capacities for the safe and reliable transport of liquid contents. Our combination IBCs meet the requirements of many different industries and have proven themselves in practical use over the years. The product lines, featuring specialized industry-specific components, offer functional solutions for non-hazardous, hazardous, and flammable liquids. WERIT IBCs, with their unique design, are optimized for reuse and recycling





# ▼ We're your solution Partner

## Your expert in packaging technology

As specialists in plastics processing, we design and manufacture sophisticated, custom-made products for a wide range of industries. We design the tools and moulds required for production in-house, and manufacture and maintain them in our own tool shop in some cases.

Thanks to our extensive expertise, high level of vertical integration and efficient supply chain, we have the flexibility required to respond quickly to our customers' needs and are a reliable partner in many specialist fields.

### Headline

- ▼ Intermediate Bulk Container
- ▼ Canisters
- ▼ Reusable transport packaging
- ▼ Plastic pallets

### Industries

- ▼ Beverages
- ▼ Food
- ▼ Pet food
- ▼ Automotive industry, suppliers
- ▼ Chemicals, Pharmaceuticals, Cosmetics
- ▼ Logistics



## ▼ Your preferred medium?

Depending on the properties of the liquid being transported, we have the right IBC for you in our range.



### Hazardous substance – UN

For the transport of dangerous goods, packaging must have the legally required certification. The certified WERIT TOPline IBCs have passed the rigorous testing requirements set by independent testing institutes. Compliance with these specific quality requirements is regularly checked by our quality assurance system and monitored by BAM and TÜV.

### Flammable – Ex

Containers for liquids with a flash point below 61°C require additional certification. The WERIT IBCs from the POLYex range have been tested and approved by independent testing bodies for use in EX Zones 1 and 2. TÜV and BAM regularly check compliance with the quality criteria.



### Food – certified

Packaging for the beverage and food industries must meet higher standards of cleanliness and purity, and must be food-safe. Our NUTRiline range of IBCs is manufactured to the FSSC 22000/BRC standard, offering protection against contamination and tampering.



### Standard – NON-UN

Our ECOLine IBCs are ideal for safely and reliably filling and transporting non-hazardous liquids that are not subject to any special regulations.

# ▼ Dimensions and Features

Extra small, Small, Medium, Large

Our IBCs are available in capacities of 300, 600, 800 and 1000 litres. Depending on the IBC line and the requirements profile, specific module options are available. There is also a suitable range of accessories available.



## 300 I

Its compact size makes it an easy-to-handle alternative to plastic drums, whilst offering all the benefits of an IBC. Suitable for products with a short shelf life and for customers with smaller order quantities.



## 600 I

The preferred, medium-sized container, which is the same size as a Euro pallet and is often used as an intermediate size between a standard 1,000-litre IBC and a drum.



## 800 I Basis and Euro

Compared to the 1000-litre IBC, the **800 I Basis model** is shorter in height, thereby allowing for optimal use of the cargo space in shipping containers. The **800 I Euro** offers an optimised capacity within the standard dimensions of a Euro pallet (1200 x 800 mm).



## 1000 L

The standard IBC size, with the standard dimensions of an industrial pallet (1200 x 1000 mm).

# ▼ Quality requires Qualifications

WERIT products are certified by recognised, independent testing institutes in accordance with specific requirements. On specific topics, WERIT supports the development of the relevant standards through the IK industry association.

## Quality management – more than just a seal

The quality of processes and products is one of the key competitive factors. Our core principle is a consistent focus on the customer, whose requirements serve as our benchmark.

As a European group of companies, WERIT consistently implements a certified quality management system. This is not merely a mark of quality; it ensures efficient, reliable and reproducible results that are consistent across departments and sites.

## For long-term efficiency gains in resource use:

WERIT-Kunststoffwerke, with its German sites in Altenkirchen, Buchholz and Ottendorf, has been certified to the ISO 50001 energy management system since 21 August 2014.





General Information

ECOline -

TOPline

POLYex

BLUEline

NUTRIline

PROTECline

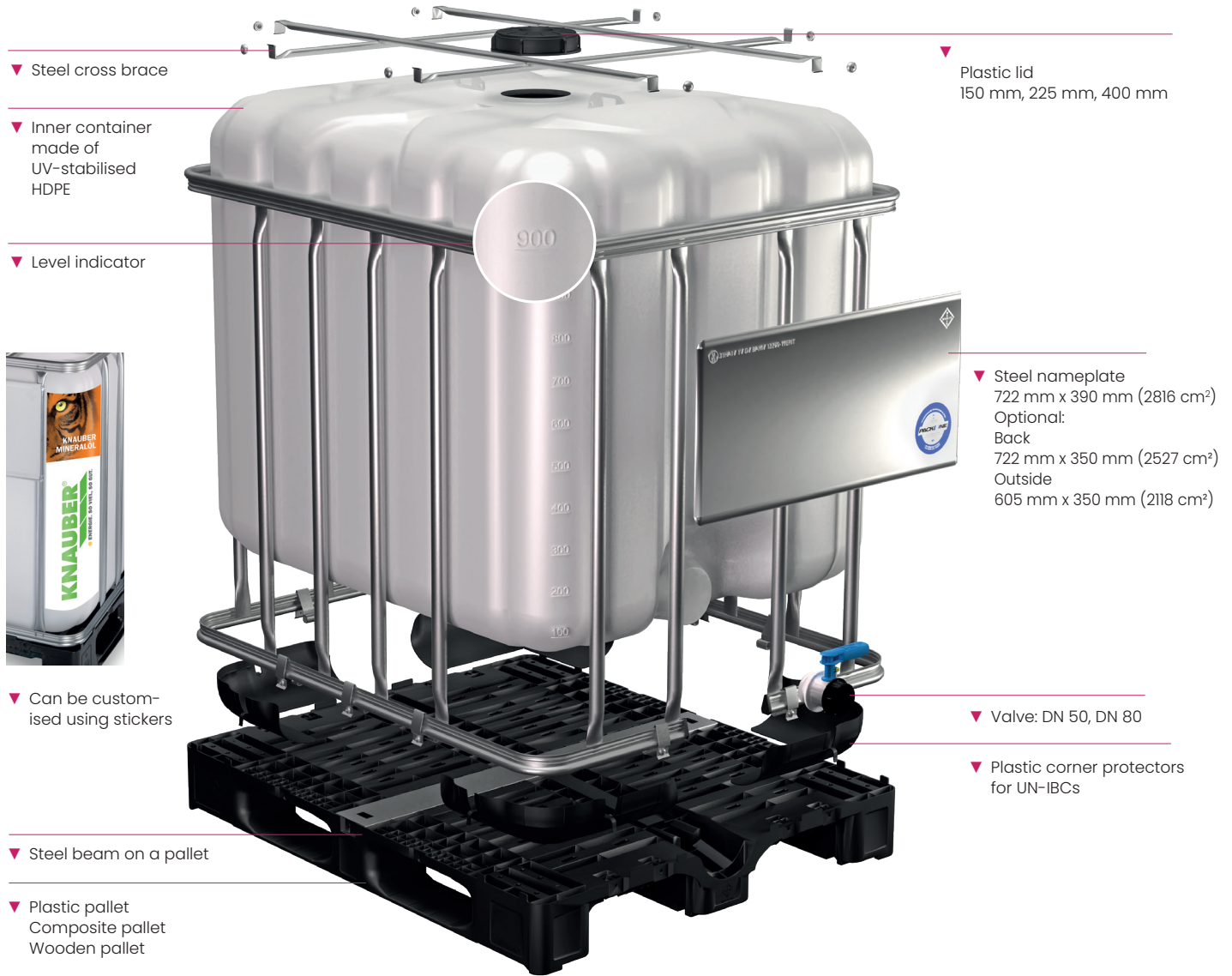
COMPACTline

RECOline

Accessories

# ▼ Modular Specialists

1000 litres



▼ Steel cross brace

▼ Plastic lid  
150 mm, 225 mm, 400 mm

▼ Inner container  
made of  
UV-stabilised  
HDPE

▼ Level indicator

▼ Steel nameplate  
722 mm x 390 mm (2816 cm<sup>2</sup>)  
Optional:  
Back  
722 mm x 350 mm (2527 cm<sup>2</sup>)  
Outside  
605 mm x 350 mm (2118 cm<sup>2</sup>)

▼ Can be custom-  
ised using stickers

▼ Valve: DN 50, DN 80

▼ Plastic corner protectors  
for UN-IBCs

▼ Steel beam on a pallet

▼ Plastic pallet  
Composite pallet  
Wooden pallet



**Plastic pallet with skids**  
12/10 (1200 x 1000 mm)  
also available as a  
**frame pallet**  
12/08 (1200 x 800 mm)

**Wooden skid pallet (IPPC)**  
12/10 (1200 x 1000 mm)  
also available as a **flat pallet**  
12/08 (1200 x 800 mm)

# ▼ ECOLine

NON UN (max. density: 1.6 g/cm<sup>3</sup>)

ECOLine IBCs are suitable for the transport of non-hazardous (NON-UN) liquids.

The economical ECOLine IBCs are available in a range of configurations and are suitable for a wide variety of applications.

## Properties

- ▼ A wide range of specifications
- ▼ 400 filling opening available
- ▼ Optionally available with an inner liner



Product	Inner container	Pallets				Valve		Lid		
		Volume Litres	Wood L x W x H	Weight kg (approx.)	Plastic L x W x H	Weight kg (approx.)	DN 50	DN 80	DN 150	DN 225
ECOLine (NON UN)	600	1200 x 800 x 997	46	1200 x 800 x 1013	42	●	●	●	●	●
	800	1200 x 1000 x 989	51	1200 x 1000 x 1000	49	●	-	●	●	-
	1000	1200 x 1000 x 1152	54	1200 x 1000 x 1163	50	●	●	●	●	●



**400 dome**  
with a clamp ring lid  
(refer to Page 24)



**Interchangeable valve**



**Integrated valve**

# ▼ TOPline

UN (max. density: 1.9 g/cm<sup>3</sup>)

TOPline IBCs are tested and approved for the transport of hazardous liquids in accordance with UN 31 HA1/Y/D/BAM. The UN marking is affixed to the inner container and the label.

## Properties

- ▼ Approved for a maximum density of 1.9
- ▼ Available in all sizes
- ▼ Particularly sturdy inner container



Product	Inner container	Pallets						Valve		Cover	
	Volume Litres	Wood L x W x H	Weight kg (approx.)	Plastic L x W x H	Weigh kg (approx.)	Combi L x W x H	Weight kg (approx.)	DN 50	DN 80	DN 150	DN 225
TOPline (UN)	300*	–	–	600 x 800 x 1000	23	–	–	●	–	●	–
	600	–	–	1200 x 800 x 1013	46	–	–	●	●	●	●
	Euro 800	–	–	1200 x 800 x 1178	51	–	–	●	–	●	–
	800	1200 x 1000 x 1001	54	1200 x 1000 x 1000	53	–	–	●	–	●	–
	1000	1200 x 1000 x 1164	63	1200 x 1000 x 1163	57	1200 x 1000 x 1135	59	●	●	●	●

\* max. density: 1.6 g/cm<sup>3</sup>



**UN mark**  
UN 31 HA1/Y/D/BAM



**Corner protector**  
Additional protection for the inner container against accidental penetration by forklift tines

# ▼ POLYex

EX (max. density: 1.6 g/cm<sup>3</sup>)



POLYex IBCs are UN-tested and approved for the transport of flammable liquids and for use in EX Zones 1 and 2.

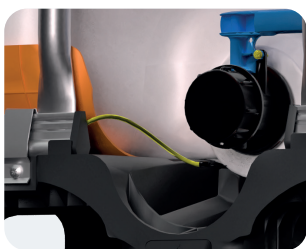
Now also available in a food-grade version.



## Properties

- ▼ Conductive multilayer technology
- ▼ Protection against electrostatic ignition hazards in accordance with IEC TS 60079-32-1:2013 and TRGS 727:2016
- ▼ Suitable for liquids in explosion group IIA
- ▼ Closed, conductive valve body
- ▼ Product in the inner container without coming into contact with metal
- ▼ Clear visual distinction between UN and non-UN IBCs

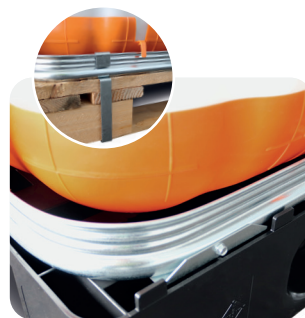
Product	Inner container	Pallets				Valve		Cover	
	Volume Litres	Wood L x W x H	Weight kg (approx.)	Plastic L x W x H	Weight kg (approx.)	DN 50	DN 80	DN 150	DN 225
POLYex (EX)	1000	1200 x 1000 x 1164	63	1200 x 1000 x 1163	59	●	●	●	●
POLYex (FDA/VO 10/2011)	1000	-	-	1200 x 1000 x 1163	59	●	-	●	●



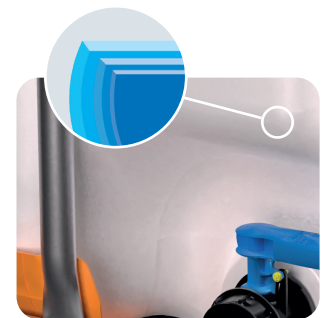
**Grounding cable**  
Conductive integrated spout fitting and grounding cable with screws on both ends.



**Corner protector**  
Additional protection for the inner container against accidental penetration by forklift tines



**Pallet grounding**  
Discharge plates for direct contact with the ground



**Multilayer**  
Several layers of plastic – the outer layer is conductive.

# ▼ BLUEline

AdBlue® (max. density: 1.6 g/cm<sup>3</sup>)

BLUEline IBCs are fitted with additional openings or dispensing systems, including for AdBlue®.

## Properties

- ▼ Optionally available with an integrated CDS or Micromatic dispensing system
- ▼ Optional without a tap
- ▼ With PMDS lid (ventilation and air intake), the container can be emptied without opening the lid
- ▼ UN version available



Product	Inner container	Pallets					Weight kg (approx.)	Valve				Cover	
	Volume Litres	Wood L x W x H	Weight kg (approx.)	Plastic L x W x H	Weight kg (approx.)	Combi L x W x H		with-out	DN 50	DN 80	DN 150	DN 225	
BlueLine (AdBlue®)	300	-	-	600 x 800 x 1000	24	-	-	●	●	-	●	-	
	600	-	-	1200 x 800 x 1013	48	-	-	●	●	●	●	●	
	1000	1200 x 1000 x 1164	63	1200 x 1000 x 1163	58	1200 x 1000 x 1135	60	●	●	●	●	●	



**CDS dispensing system**  
with dispensing nozzle



**Flange**  
with spigot S 56 x 4



**Lid**  
PMDS



**Micromatic RPV**  
300 | IBC

# ▼ NUTRiline

Food (max. density: 1.6 g/cm<sup>3</sup>)

NUTRiline products are specifically designed to meet the needs of the food industry.

## Properties

- ▼ Complies with the requirements of FDA/EN 10/2011, Halal, Kosher
- ▼ Manufactured pursuant to BRC, FSSC 22000 and HACCP
- ▼ Manufacture of components from primary raw materials in a cleanroom
- ▼ Valve and cover secured with a seal
- ▼ Durable, low-maintenance plastic pallet
- ▼ Reduced risk of deposits thanks to the vertical frame structure
- ▼ Plastic cover to protect against dirt during storage and transport
- ▼ Also available in a UN-compliant version



Product	Inner container	Pallets		Valve	Cover	
	Volume Litres	Plastic L x W x H	Weight kg (approx.)	DN 50	DN 150	DN 225
NUTRiline (Food)	600	1200 x 800 x 1013	42	●	●	●
	800	1200 x 1000 x 1013	50	●	●	–
	1000	1200 x 1000 x 1163	51	●	●	●

\* Valve integrated  
UN version available on request

REACH COMPLIANCE

CERTIFIED KOSHER

Halal

BRCGS Packaging Materials CERTIFICATED

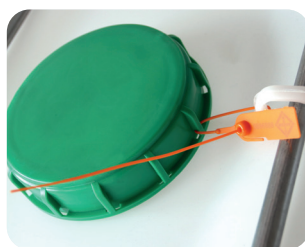
- ▼ REACH Declaration
- ▼ Kosher certificate
- ▼ Halal certificate
- ▼ Declaration of Conformity with Food Law
- ▼ Global Certification for Food Contact (BRC, in UK only)
- ▼ FSSC 22000



**Description**  
FDA, VO 10/2011



**Valve sealed**  
Seal can be removed without tools



**Sealed lid**  
Seal can be removed without tools



**Plastic sheet cover**  
To protect against dirt during storage and transport

# ▼ Nutriline<sup>aseptic</sup>

High-viscosity foodstuffs (max. density: 1.4 g/cm<sup>3</sup>)

NUTRiline<sup>aseptic</sup> for highly viscous foods and sensitive liquids.

## Properties

- ▼ IBC with a flexible inner bag (FlexBag)
- ▼ Integrated, heat-resistant tap
- ▼ Galvanised, easy-to-clean tubular steel frame
- ▼ Low-maintenance plastic pallet with no metal parts that come into contact with the ground
- ▼ Ready to fill, no assembly or pre-cleaning required
- ▼ Optimised for sterile filling and emptying
- ▼ Returns and reuse via the PackOne system



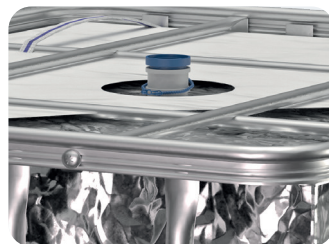
Product	Inner container	Pallets		Valve	Elpo connector	AirAssist connector
	Volume Litres	Plastic L x W x H	Weight kg (approx.)	DN 50		
Nutriline <sup>aseptic</sup> (Food)	600	1200 x 800 x 1013	36	●	–	●
	1000	1200 x 1000 x 1063	43	●	●	–
	1000	1200 x 1000 x 1063	43	●	–	●



- ▼ Kosher certificate
- ▼ Declaration of Conformity with Food Law



**Radiation-sterilised liner**  
with an oxygen barrier and UV protection

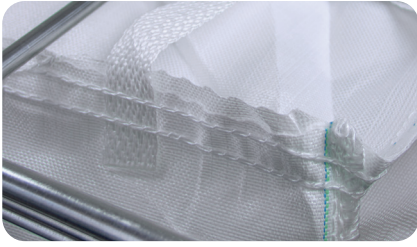


**TopFill**  
with Elpo connection for low-viscosity (< 6000 mPas) products



**AirAssist**  
with air-assisted discharge for highly viscous (> 8000 mPas) products

## Filling



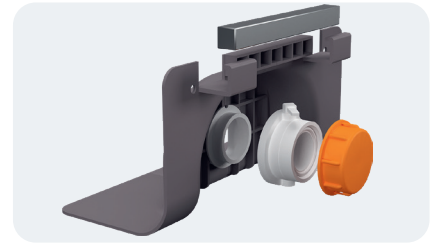
### FlexBag

- ▼ Outer shell made of PE fabric
- ▼ LDPE inner liner for a longer shelf life:
- ▼ Multi-layered, metallised
- ▼ Radiation-sterilised at 15 kGy
- ▼ Free from bacteria and spores
- ▼ Airless
- ▼ With an oxygen barrier
- ▼ UV protection
- ▼ High resistance to flex cracks
- ▼ Patented folding ensures full capacity
- ▼ FDA-compliant pursuant to EN 10/2011, Halal, Kosher



### Elpo connection

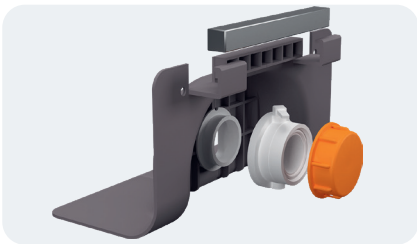
- ▼ For standard filling systems in the food industry
- ▼ Can withstand steam up to 125°C



### Safety

- ▼ The valve is tamper-proof (sealed)
- ▼ A separate, clip-on handle prevents accidental opening
- ▼ A detached valve flap is preventing it from opening
- ▼ The aseptic indicator indicates sterility (red = sterile)

## EXTRACTION



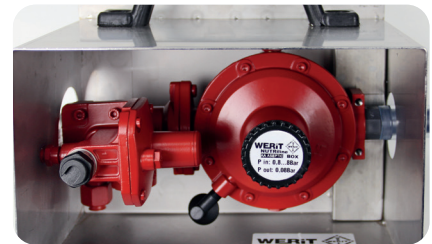
### Valve

- ▼ The flap valve enables under-level filling and rapid emptying
- ▼ Housing and flap made of POM, suitable for autoclaving at least 5 times up to 125°C
- ▼ Heat-resistant silicone seal (remains airtight even after repeated, sterile partial removal)
- ▼ With dairy pipe thread (DIN 11851) for standard connections in the food industry



### AirAssist connection

- ▼ Air inlet for inflating the air cushion
- ▼ Sterile discharge of high-viscosity liquids by deflating the separate air cushion



### AirAssist Box

- ▼ The AirAssist Box controls the air pressure in the air cushion in sync with the deflation process
- ▼ Safety valves prevent overpressure and damage to the liner
- ▼ Easy to connect, similar to a stainless steel IBC

# ▼ PROTEcline

UV protection (max. density: 1.6 g/cm<sup>3</sup>)

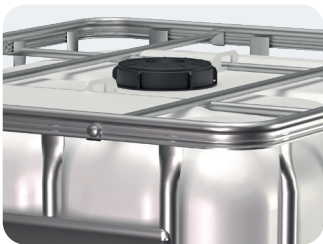
PROTEcline IBCs are fitted with special colourants that protect light-sensitive contents from UV radiation.

## Properties

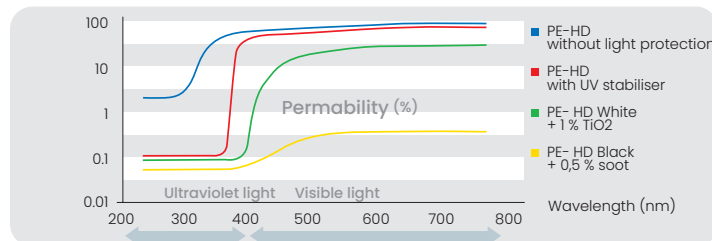
- ▼ Available with a white or black inner container
- ▼ UN version available
- ▼ Solid-coloured inner container (without transparent strip)



Product	Inner container	Pallets		Valve		Cover		Colour	
	Volume Litres	Plastic L x W x H	Weight kg (approx.)	DN 50	DN 80	DN 150	DN 225	●	○
PROTEcline (UV protection)	600	1200 x 800 x 1013	46	●	●	●	●	●	○
	1000	1200 x 1000 x 1163	57	●	●	●	●	●	●



White inner container



Light protection / Light transmission

# ▼ COMPACTline

300 litres UN (max. density: 1.6 g/cm<sup>3</sup>)

COMPACTline is the unique, space-saving IBC with a capacity of 300 litres.

## Properties

- ▼ UN-approved
- ▼ Stable, stackable
- ▼ No marking required on the opposite side
- ▼ Optional with spigot S 56 x 4
- ▼ Optionally available with an integrated CDS or Micromatic dispensing system
- ▼ The standard size corresponds to half a Euro pallet



Product	Pallet		Valve		Cover	Optional extras		
	Plastic L x W x H	Weight kg (ap- prox.)	DN 50	with- out	DN 150 EPDM	Sheath S 56 x 4	CDS system	Micromatic
COMPACTline (300 l UN)	600 x 800 x 1000	23	●	●	●	●	●	●



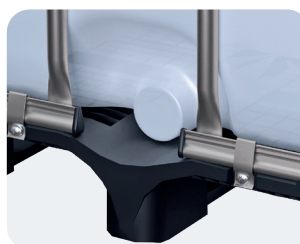
### Can be stacked safely

2 COMPACTline units are equivalent to the volume of 3 drums (approx. 600 litres)



### Dispensing system

Fitted with a valve and a dip tube, or just a plug



### Without a valve

optional



## Closed Loop

**Free collection** of your WERIT IBCs or IBCs from other manufacturers via the PACKONE Ticket. Cleaning or refilling these IBCs and returning your own IBCs for reuse. (RECOline)

### Advantages:

- ▼ You reduce your packaging costs by re-using the IBCs in the supply chain after they have been cleaned or refilled.
- ▼ Easy handling when returning used IBCs. Either you collect the empty IBCs from your customers when delivering the new, filled IBCs, or your customer requests collection via the PACKONE ticket. By offering these options, you provide your customers with a high standard of service.
- ▼ Your carbon footprint is reduced by reusing your cleaned or refilled IBCs in a way that conserves resources.

## Open Loop

**Free collection** of your WERIT IBCs or IBCs from other manufacturers via the PACKONE Ticket. They purchase and use only new WERIT IBCs and ensure that the IBCs are reused.

### Advantages:

- ▼ They purchase only new IBCs and ensure that used IBCs are recycled.
- ▼ Your customers can easily and conveniently register their empty IBCs via the PACKONE Ticket for prompt collection by a qualified network partner.
- ▼ Your Carbon footprint will be reduced.

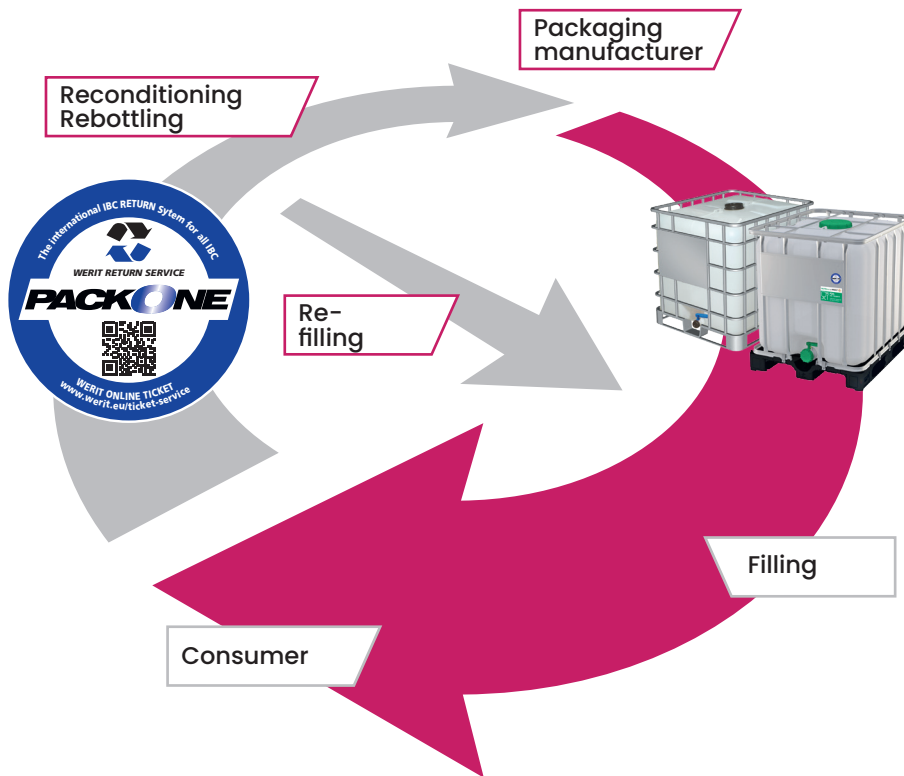
# ▼ RECOline

## Return scheme / Reconditioned IBCs

The IBC modular system allows for both easy cleaning and cost-effective reconditioning through the replacement of individual components. Ideal conditions, then, for cost-effective and resource-efficient reusable use. Choose between two circulation systems for use with reconditioned or new IBCs.

The PACKONE ticket system allows you to arrange the free return of IBCs and the collection of your used and empty IBCs at the touch of a button. Regardless of the type or brand, we will take back your used and empty IBCs free of charge (please note our return policy at [www.packone.com](http://www.packone.com)).

### The Free Return Scheme via the PACKONE Ticket Service



Both WERIT IBCs and IBCs from other manufacturers are returned to the supply chain after the inner container has been cleaned or replaced. During rebotting, the WERIT inner container or the Universal Bottle (a specially designed inner container) is used for various makes of IBCs.

Rebottled IBCs can be supplied in NON-UN or UN versions.

# ▼ Accessories

## Valves, lids and bung plugs

### Gate valve

The drain valve, which has been tried and tested millions of times, guarantees quick and controlled drainage. The special design utilises the hydrostatic pressure of the fluid to press the seal more firmly into the chamfer and provide a biaxial seal. This ensures a tight seal even after repeated opening and closing.

In addition to the universal PE-CP seal, which is suitable for almost all liquid media, EPDM and FPM seals are available as optional extras.

#### Properties

- ▼ Available in DN 50 or DN 80
- ▼ Integrated or replaceable
- ▼ Locks in the open position
- ▼ Multiple use without any loss of quality

#### Gate valve DN 50 / 80

PE-CP universal seals, which are suitable for the vast majority of process fluids, as well as EPDM or FPM seals, round off the range of applications for virtually all process fluids.

The safety pin on the handle and the easily removable aluminium plate on the spout ensure the product remains in its original condition right up to the moment of use.



Valve	External thread	Colour	
		Nature	
DN 50 (50 mm)	S 60 x 6		
DN 80 (80 mm)	S 100 x 8		

#### Other configuration options:

Seal	Colour		
Valve	PE-CP	FPM	EPDM
Handle	FPM	FPM	EPDM

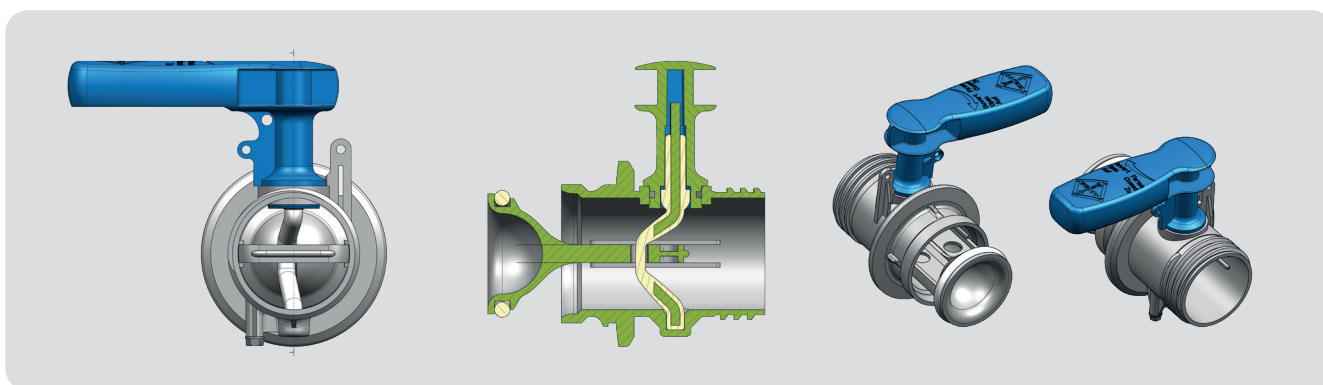
Seal	Item number	Version	Handle colour	Seal	
DN 50 (incl. screw cap, sealing ring, clamp and screw, pack of 20)	500-00000251	Nature		PE-CP	
	500-00000250			EPDM	
	594-000000002			FPM	
DN 80 (including screw cap, sealing ring, Profile clamp and screw, pack of 10)	239-10002033	Black		PE-CP	
	239-00002021			EPDM	
	594-000000003			FPM	
	594-000000008		Nature		PE-CP
	594-000000006				EPDM
594-000000007		FPM			
	239-10002033	Black		PECP	

All key components of the valves are manufactured, assembled and tested automatically under cleanroom conditions. A safety pin on the handle and the aluminium plate with an 'Easy Peel' PE inner coating at the spout ensure authenticity right up to the moment of use.

EASY PEEL Aluminium board	Item number	VPE
DN 50	859-00000014	720
DN 80	859-00000015	125



Locking pin	Item number	VPE
DN 50 / 80	500-00000031	2000



The table shows the suitable seals by material group. It is the responsibility of the filler to test the seals for suitability. We would be happy to advise you.

Durability depending on the filling medium (examples)			
Fillers	FPM (Viton)	EPDM	PE-CP
Alcohol/Ethanol	●●●●●●●●	●●●●●●●●	●●●●●●●●
Amines	●●●●●●●●	●●●●●●●●	●●●●●●●●
Alkali	●●●●●●●●	●●●●●●●●	●●●●●●●●
Water	●●●●●●●●	●●●●●●●●	●●●●●●●●
Oxidising agents	●●●●●●●●	●●●●●●●●	●●●●●●●●
Vegetable oil	●●●●●●●●	●●●●●●●●	●●●●●●●●
Acids	●●●●●●●●	●●●●●●●●	●●●●●●●●
Phenols	●●●●●●●●	●●●●●●●●	●●●●●●●●
Halogenated hydrocarbons*	●●●●●●●●	●●●●●●●●	●●●●●●●●
Hydrocarbons* aliphatic	●●●●●●●●	●●●●●●●●	●●●●●●●●
Hydrocarbons* aromatic	●●●●●●●●	●●●●●●●●	●●●●●●●●
Hydrocarbons* cyclical	●●●●●●●●	●●●●●●●●	●●●●●●●●
Ketone, aldehyde	●●●●●●●●	●●●●●●●●	●●●●●●●●
Ether	●●●●●●●●	●●●●●●●●	●●●●●●●●
Esters	●●●●●●●●	●●●●●●●●	●●●●●●●●

very durable ●●●●●●●●  
 durable ●●●●●●●●  
 limited durability ●●●●●●●●  
 not durable ●●●●●●●●  
 \* KW: Hydrocarbons

# ▼ Accessories

## lids and bung plugs

WERIT screw-on lids are made from HDPE and come fitted with an EPDM seal as standard. All screw caps are available in nominal sizes DN 150 and DN 225 for UN and non-UN IBCs.

The lids can also be fitted with bung plugs/pressure equalisation elements (PEE) on request (see illustration below on the right).



Screw cap UN / NON UN DN 150 (sealable)	Internal thread S 160 x 7	Colour		Equipment
		●	●	
with a bung S 56 x 4	●	●	-	Seal DAE Ventix
closed	●	●	-	Black

Screw cap UN / NON UN DN 225 (sealable)	Internal thread S 240 x 6	Colour		Equipment
		●	●	
with a bung S 56 x 4	●	●	-	Seal DAE Ventix
closed	●	●	●	Black



The DN 400 filling opening with a clamping ring cover is ideal for use with an agitator.

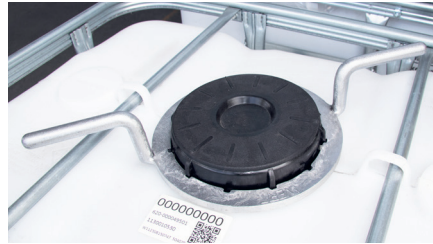
Clamping ring lid DN 400 (sealable)	Clamping ring	Colour	
		●	●
closed	●	●	-

Possible bung caps for DN 150 and DN 225 covers closed or with a suitable pressure-equalising element

- ▼ compatible with standard DAE
- ▼ The version can be identified by the colour of the seal cap
- ▼ Lid can be sealed
- ▼ All pressure-compensating elements are bidirectional

Bung (Figure)	Cap colour	Pressure equalisation element	Air flow rate approx. litres per hour
		PMDS	12000
		DAE	400
		SS100	130
		PTFE	70
		-	closed Thread S 56 x 4
		-	closed Thread R2

Ring spanner (metal) for opening and closing WERIT IBC lids.



Ring spanner	Item no.	Width (mm)	Weight (kg)
DN 150	500-000000248	455	0.52
DN 225	500-000000249	550	0.80

### Outlet elbows and adapters

Designed to work with the WERIT IBC, we stock a range of standard, useful accessories that allow for integration with other systems.



#### DN 50 outlet elbow

S 60 x 6 external Internal thread to S 60 x 6 external thread

Part no: 500-000000137

Seal Alveolit

Pack size 10



#### DN 50 outlet elbow

S 60 x 6 external Internal thread to S 60 x 6 external thread

Part no: 500-000000141

Seal Alveolit

Pack size 10



#### DN 80 outlet elbow

S 100 x 8 external Internal thread to S 100 x 8 external thread

Part no: 500-000000139

Seal EPDM

Pack size 10



#### DN 50 outlet elbow

S 60 x 6 external Internal thread to R 2" external thread

Part no: 500-000000254

Seal NBR

Pack size 10



#### DN 50 outlet elbow

S 60 x 6 external Internal thread to apr. 65 x 1/6" dairy pipe thread

Part no: 500-000000255

Seal NBR

Pack size 10



#### DN 50 outlet elbow

S 60 x 6 external Internal thread to 50 mm Camloc coupling

Part no: 820-000000122

Seal Santoprene

Pack size 5

## ▼ Accessories

### Heating mats, liners and plastic covers



#### Heating mat:

Heating mats for installation between the pallet and the inner container. For products that remain in a liquid state or only reach a liquid state at hot temperatures.

Aluminium heating mat	Dimensions (mm)	Technical data
Part no: 859-00000011 Suitable for pallet size 1200 x 1000mm	1120 x 930	Power: 1400 W Volt: 230 V Mono Temp.: 70°C Resistance: 51 Ohm; 2.4 Ohm/m Silicone radiant heaters: 21.25 m Protection class: IP54



#### Inliner:

WERIT inliners are easy to install. The inliners protect the inner container from contamination and allow it to be reused multiple times without the need for cleaning.

Inliner	Dimensions (W x H x L x number of layers in mm)	Lid/valve size Capacity (litres)
859-00000016	1150 + 920 x 2620 x 2	225 / 50 (1000)
859-00000017	1130 + 730 x 2265 x 2	225 / 50 (600)

Other version available on request

- ▼ FDA certified
- ▼ Integrated installation aids

#### Plastic sheet covers:

Plastic sheet covers protect the IBC from contamination during transport and storage.

- ▼ LDPE
- ▼ Antistatic
- ▼ Transparent
- ▼ Easy to put on and take off
- ▼ Complies with food safety regulations
- ▼ FDA approved



PELD film cover	Dimensions (W x H x D mm)	Material (thickness 0.08 mm)
Part no: 881-00000006	1300 x 1100 x 1500	PELD 03, PELLD C4, PEMD
Part no: 881-00000005	1300 x 1100 x 1300	PELD 03, PELLD C4, PEMD

## WERIT IBC User Manual

### Selection

WERIT IBCs are manufactured exclusively for professional and industrial users who have a basic understanding of how to handle and use IBCs. We offer a range of combination IBCs (K-IBC) for the transport and temporary storage of non-hazardous and hazardous (Packaging Groups II and III) liquid contents. In the case of dangerous goods, ensure that the relevant authorisation is in place. K-IBCs are designed for pressureless filling and emptying. It is the user's responsibility to ensure that the IBC is suitable for the contents. We'd be happy to help you choose.

### Storage of empty IBCs

IBCs must be transported in an upright position. When stacking multiple items, ensure that they are nested correctly. IBCs must be stored with their lids and valves closed in clean, dry rooms. The storage temperature should not be below -10°C or above 40°C. Sparking and contact with hot surfaces (radiators, pipes, etc.) must be avoided at all costs.

### Filling

The inspection prior to filling is the responsibility of the filler (ADR sub-section 4.1.1.9). First, check that the IBC is not damaged, that the seals are intact and that the drain valve is closed. Pour the contents into the top filling opening at atmospheric pressure. The filling temperature should be less than 60°C, and the continuous temperature should not exceed 40°C for water-like media. Where aggressive media are involved, the temperatures must be adjusted accordingly. To prevent deformation during cooling, ensure that the PE inner container is adequately ventilated. Whether and in what form a pressure-equalising element is used in the lid is at the user's discretion. The IBC must be sealed using the original lid and a tightening torque of 70–80 Nm for the DN 150 screw cap and 100–110 Nm for the DN 225 screw cap.

### Transport

The filler must ensure that the filled IBC is secured against accidental opening during transport. Before lifting, the K-IBC must be checked for transport damage. The IBC should always be fully loaded, whether empty or full, and transported upright on a pallet. Polyex IBCs must not be pushed, as the deflector plates could break off. When transporting goods with a forklift truck, never drive without tilting the load towards the driver. Never lift or move the IBC using chains or straps attached to the crossbars or frame. When stacking, ensure that the surface on which you are stacking is level, that the specified stacking load is not exceeded, and that the IBCs fit together securely. Only stack IBCs of the same type. Only use forklift trucks that have the required lifting capacity and whose forks are long enough to slide underneath the entire length of the IBC. When transporting by rail, lorry or sea container, please ensure that the IBC is secured in accordance with the regulations. Protect the IBC from impact and the fittings from damage. If the safety of the IBC has been compromised by a fall or damage, it should no longer be used.

### Drainage

Make sure that the IBC is placed flat on a level surface that is free of foreign objects. Ideally, empty the IBC via the bottom drain valve. Unscrew the dust cap from the valve and remove the aluminium plate completely by pulling on the tab. The safety pin or seal must be removed. Before opening the tap, unscrew the top cap to allow air into the container and prevent it from collapsing. Turn the valve handle 180° from right to left until it stops. Residual quantities of flammable liquids must be avoided at all costs. If the fitting is connected to a permanently installed piping system, the supply line must be installed in such a way that thermal expansion and vibrations do not cause mechanical damage to the IBC. If a pipe is connected, heavy components must be supported independently.

If the tank is to be emptied via the filler opening using a pump, care must be taken to ensure that the pump is not attached directly to the frame.

### Multiple Use

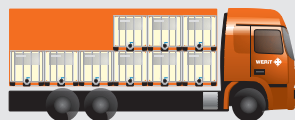
When used with food, we do not recommend reusing the inner container. IBCs may be reused for other purposes, provided that they are inspected prior to filling and consignment for transport to ensure that they are free from corrosion, contamination or other damage. In addition, each IBC must be inspected to ensure that the operating equipment is functioning correctly. The responsibility for testing and reuse lies with the user. When reusing IBCs for the transport of dangerous goods, it should be noted that the maximum permitted period of use, calculated from the date of manufacture, is five years, depending on the contents. After two and a half years, a periodic inspection must be carried out on each IBC and documented. WERIT IBCs are returned via the free Packone return scheme and reconditioned for reuse.

### Dynamic and Static Load

#### Dynamic stack height

The stacking height depends on the density of the contents

- ▼ Above 1.4: Single
- ▼ Up to 1.4: Double



#### Static Stack Height

- ▼ 3–4 times, depending on the density of the contents and the UN approval



### IBC Coding (ADR / RID / IMDG)

31HA1 / Y / 0311 / D / BAM / 12260-WERIT / 4265 / 2030 / 1060l / 61kg / 100kPA

31HA1: For liquid substances, with a rigid plastic inner container and a steel outer casing  
 Y: Packaging groups II and III  
 0311: Month and year of manufacture  
 D: Abbreviation: Country / Competent testing body / Approval number / Manufacturer's name  
 BAM: Test load for the stacking pressure test in kg / maximum permissible gross mass in kg  
 12260-WERIT: Overflow volume / Specific gravity / Test pressure  
 4265 / 2030 / 1060l / 61kg / 100kPA: Test load for the stacking pressure test in kg / maximum permissible gross mass in kg



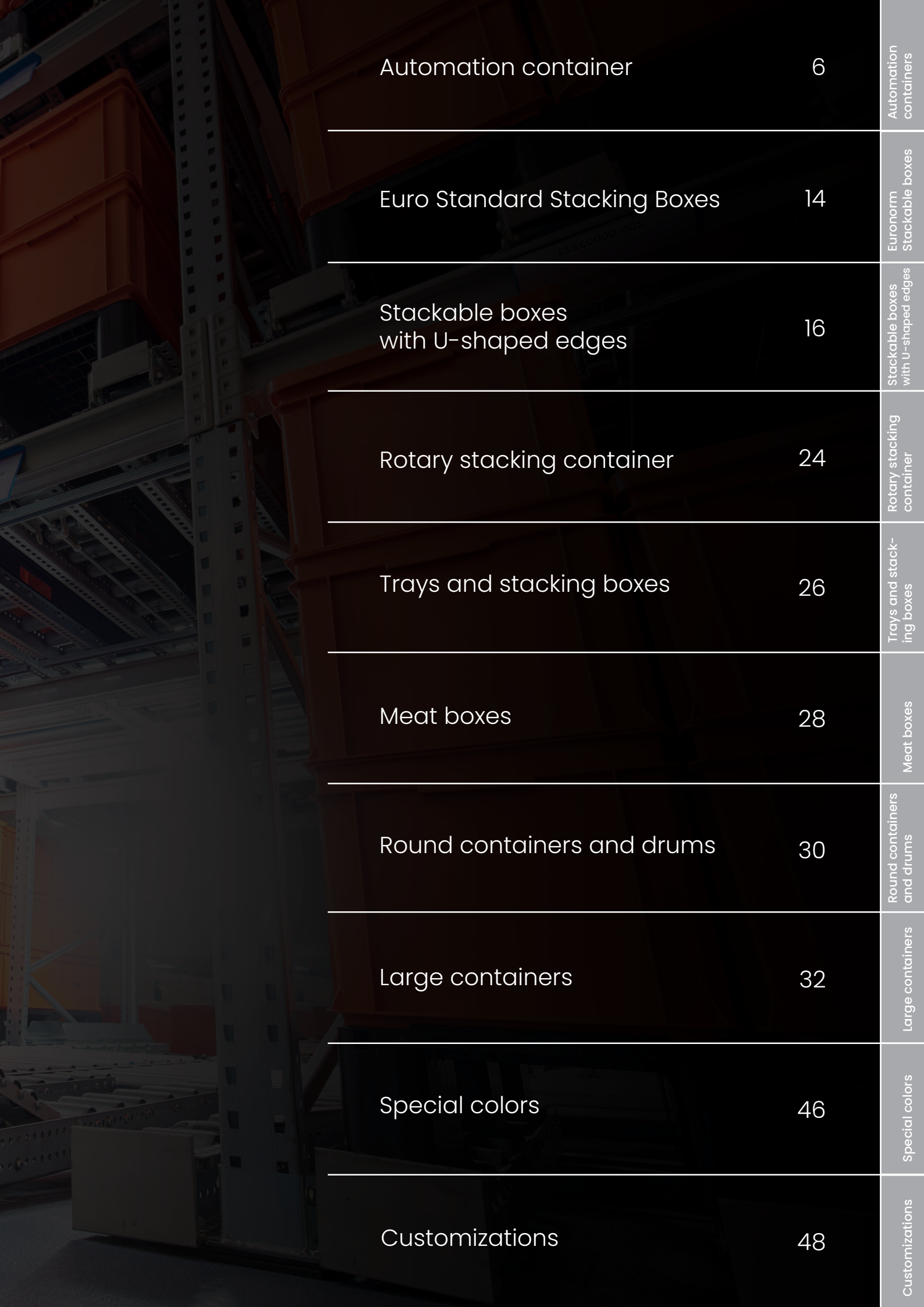
### Please note

All dimensions, weights and technical specifications listed in the catalogue are approximate. They do not constitute a binding guarantee of specific characteristics or suitability for specific purposes. Technical tolerances comply with DIN standards. Subject to change without notice. This information is based on our current technical knowledge and experience. Due to the wide range of potential external factors affecting the use of the products, which are beyond our control, users are still required to carry out their own tests and examinations. No legally binding warranty regarding specific characteristics or suitability for a particular purpose can be inferred, either expressly or impliedly. Intellectual property rights must be observed where applicable.



## Reusable transport packaging





Automation container	6	Automation containers
Euro Standard Stacking Boxes	14	Euronorm Stackable boxes
Stackable boxes with U-shaped edges	16	Stackable boxes with U-shaped edges
Rotary stacking container	24	Rotary stacking container
Trays and stacking boxes	26	Trays and stacking boxes
Meat boxes	28	Meat boxes
Round containers and drums	30	Round containers and drums
Large containers	32	Large containers
Special colors	46	Special colors
Customizations	48	Customizations

# Automation container

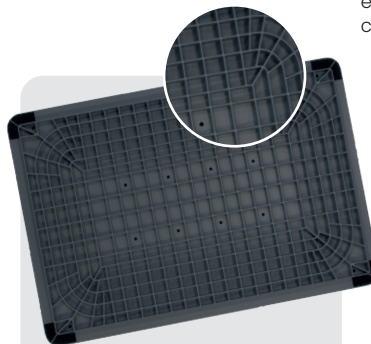
## INTRABOX

The robust automation containers in the INTRABOX series have been specially designed for use in semi-automatic and fully automatic systems.

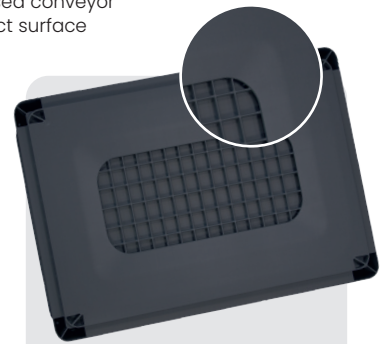
They are ideally suited to the demands of modern warehousing and transport logistics. And combines a sturdy construction with a low weight.



Smooth bottom,  
weight capacity up  
to 20 kg



Running-tread base  
(VB01), load capaci-  
ty up to 35 kg



Heavy-duty runner  
base (VL01), load  
capacity up to 50 kg

100 mm continuous,  
enclosed conveyor  
contact surface

### Properties

- ▼ Suitable for manual handling as well as semi- and fully automated conveyor systems
- ▼ High dimensional stability thanks to a sturdy base and double-walled corner construction
- ▼ Lift shafts for automated lifting equipment
- ▼ Centre holes at the corners
- ▼ Optionally with drainage holes in accordance with VDS or FM Global

## Automation container INTRAbOX | 300 x 200 mm

Outer dimensions (mm)	Internal dimensions (mm)	Volume (L)	Content load	Stacking load	Bottom	Handles	Colour	Item no.
300 x 200 x 120	254 x 232 x 115	5	10	300	Flat bottom	closed	●	337-00000001

## Automation container INTRAbOX | 400 x 300 mm

Outer dimensions (mm)	Internal dimensions (mm)	Volume (L)	Content load	Stacking load	Bottom	Handles	Colour	Item no.
400 x 300 x 120	354 x 254 x 115	11	20	300	Flat bottom	closed	●	337-00000002
	354 x 254 x 102	9	35	300	Running-tread base medium	closed	●	337-00000003
400 x 300 x 170	354 x 254 x 165	15	20	300	Flat bottom	open	●	337-00000004
	354 x 254 x 152	14	35	300	Running-tread base medium	open	●	337-00000005
400 x 300 x 220	354 x 254 x 215	20	20	300	Flat bottom	open	●	337-00000006
	354 x 254 x 202	19	35	300	Running-tread base medium	open	●	337-00000007

## Automation container INTRAbOX | 600 x 400 mm

Outer dimensions (mm)	Internal dimensions (mm)	Volume (L)	Content load	Stacking load	Bottom	Handles	Colour	Item no.
600 x 400 x 120	554 x 354 x 115	23	20	300	Flat bottom	closed	●	337-00000008
600 x 400 x 120	554 x 354 x 102	21	35	300	Running-tread base medium	closed	●	337-00000009
600 x 400 x 120	554 x 354 x 102	21	50	300	Running-tread base heavy	closed	●	337-00000010
600 x 400 x 170	554 x 354 x 165	33	20	300	Flat bottom	open	●	337-00000011
600 x 400 x 170	554 x 354 x 152	31	35	300	Running-tread base medium	open	●	337-00000012
600 x 400 x 170	554 x 354 x 152	31	50	300	Running-tread base heavy	open	●	337-00000013
600 x 400 x 220	554 x 354 x 215	43	20	300	Flat bottom	open	●	337-00000014
600 x 400 x 220	554 x 354 x 202	41	35	300	Running-tread base medium	open	●	337-00000015
600 x 400 x 220	554 x 354 x 202	41	50	300	Running-tread base heavy	open	●	337-00000016
600 x 400 x 270	554 x 354 x 265	53	20	300	Flat bottom	open	●	337-00000017
600 x 400 x 270	554 x 354 x 252	50	35	300	Running-tread base medium	open	●	337-00000018
600 x 400 x 270	554 x 354 x 252	50	50	300	Running-tread base heavy	open	●	337-00000019
600 x 400 x 320	554 x 354 x 315	63	20	300	Flat bottom	open	●	337-00000020
600 x 400 x 320	554 x 354 x 302	61	35	300	Running-tread base medium	open	●	337-00000021
600 x 400 x 320	554 x 354 x 302	61	50	300	Running-tread base heavy	open	●	337-00000022
600 x 400 x 420	554 x 354 x 415	83	20	300	Flat bottom	open	●	337-00000023
600 x 400 x 420	554 x 354 x 402	81	35	300	Running-tread base medium	open	●	337-00000024
600 x 400 x 420	554 x 354 x 402	81	50	300	Running-tread base heavy	open	●	337-00000025
800 x 600 x 220	755 x 555 x 215	92	25	300	Flat bottom	open	●	337-00000026
800 x 600 x 220	755 x 555 x 202	83	35	300	Running-tread base medium	open	●	337-00000027
800 x 600 x 320	755 x 555 x 315	134	25	300	Flat bottom	open	●	337-00000028
800 x 600 x 320	755 x 555 x 302	129	35	300	Running-tread base medium	open	●	337-00000029

## INTRAbx Automation container | Lid

Outer dimensions (mm)	Item no.
300 x 200	337-000000030
400 x 300	337-000000032
600 x 400	337-000000035
800 x 600	337-000000038

## INTRAbx Automation container | Hinged lid

Outer dimensions (mm)	Item no.
300 x 200	337-000000031
400 x 300	337-000000033
600 x 400	337-000000036
800 x 600	337-000000039

## Fitting accessories for hinged lids

Designation	Item no.
	346-000000021

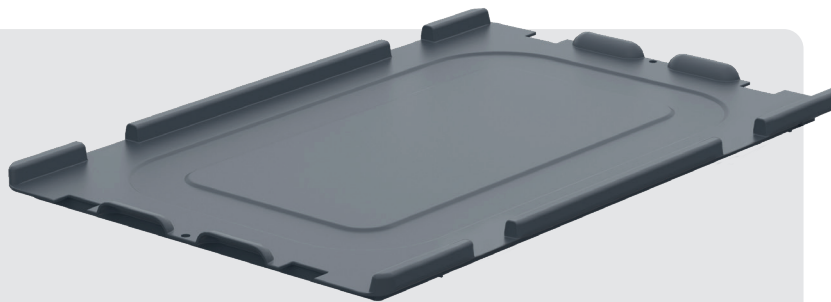
## INTRAbx Automation container | Crocodile lid

Outer dimensions (mm)	Item no.
400 x 300	337-000000034
600 x 400	337-000000037

## Fitting accessories Crocodile lid

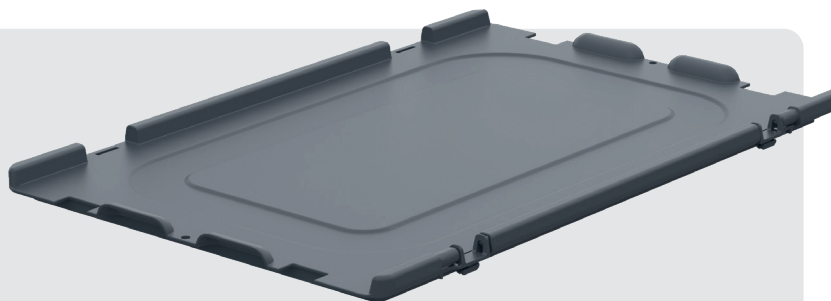
Designation	Item no.
	346-000000021

The INTRAbx container range is complemented by three matching lid types, which meet a wide variety of requirements in terms of closure, accessibility and handling. All lids are precisely tailored to the base dimensions of the container series.



## Lid

The lid is the universal standard solution for securely sealing the INTRABox. It fits snugly onto the container and can be quickly removed and replaced. Thanks to its flat design, it is ideal for stackable applications where several filled containers need to be stacked on top of one another to save space. The lid is recommended wherever the contents of the container are accessed frequently and quick, easy handling is a priority – for example, at picking stations, on the assembly line or in the warehouse.



## Hinged lid

The hinged lid combines flexibility and comfort. The lid is securely attached to the container via an integrated hinge and can be easily opened without having to remove it completely. This prevents the lid from being lost or misplaced and ensures a smooth workflow. The hinged lid is particularly suitable for workstations where the contents of the container are accessed regularly, but the lid needs to remain within easy reach and attached to the container at all times. Typical applications include assembly lines, workshops and material handling processes in intralogistics.



## Crocodile lid

The crocodile lid is an ergonomic solution. Its distinctive hinged mechanism makes it easy to open and close the container.

The lid opens simply by pressing the tab; it swings upwards smoothly, fully exposing the contents of the container. Thanks to the built-in locking mechanism, it closes reliably and securely. The crocodile lid is particularly suitable for ergonomically demanding work environments in production, assembly and order picking.

# ▼ Euro Standard Stacking Boxes

WERIT Euronorm stacking boxes are suitable for use in industry, retail and the food industry. Thanks to the wide range of options available, they are ideal for almost any application



## Properties

- ▼ Suitable for manual handling and automatic conveyor systems
- ▼ Extremely sturdy due to reinforced frame and corner construction
- ▼ Easy to clean thanks to smooth surfaces
- ▼ Resistant to acids and alkalis
- ▼ Resistant to cold and heat
- ▼ With ergonomic handles
- ▼ Made from HDPE – virgin material (3248, 3249, 3295 and 3271)  
made from PP – virgin material)
- ▼ Guaranteed food-safe
- ▼ 100% recyclable

## Euro-standard stacking boxes closed | Handlebar

Outer dimensions (mm)	Internal dimensions (mm)	Volume (L)	Weight (kg)	VPE	Stock items	Colour	Item no.
400 x 300 x 120	368 x 269 x 116	11	1	128	✓	○	330-000000080
					✓	●	330-000000081
400 x 300 x 170	368 x 269 x 166	16	1.2	96	✓	○	330-000000082
					✓	●	330-000000083
400 x 300 x 220	368 x 269 x 216	21	1.4	72	✓	○	330-000000084
					✓	●	330-000000085
400 x 300 x 270	368 x 269 x 266	26	1.6	56	✓	○	330-000000088
					✓	●	330-000000089
					✓	●	330-000000091
					✓	●	330-000000092
400 x 300 x 320	368 x 269 x 316	31	1.9	48	✓	○	330-000000093
					✓	●	330-000000094
					✓	●	330-000000096
					✓	●	330-000000097
600 x 400 x 50	565 x 365 x 46	9	1.2	160	-	○	330-000000006
					✓	●	330-000000007
600 x 400 x 75	565 x 365 x 71	14	1.3	108	✓	○	330-000000009
					✓	●	330-000000010
600 x 400 x 120	569 x 369 x 116	23	1.5	72	✓	○	330-000000011
					✓	●	330-000000013
					✓	●	330-000000014
					✓	●	330-000000015
600 x 400 x 170	569 x 369 x 166	34	1.8	48	-	○	330-000000016
					-	●	330-000000018
					-	●	330-000000020
					-	●	330-000000022
600 x 400 x 220	569 x 369 x 216	44	2.2	36	✓	○	330-000000025
					✓	●	330-000000028
					-	●	330-000000030
					✓	●	330-000000032
600 x 400 x 320	569 x 369 x 316	64	2.9	24	✓	○	330-000000035
					✓	●	330-000000037
					✓	●	330-000000039
					✓	●	330-000000041

Automation containers

Euronorm Stackable boxes

Stackable boxes with U-shaped edges

Rotary stacking container

Trays and stacking boxes

Meat boxes

Round containers and drums

Large containers

Special colors

Customizations



You can find the ESD version on the page 12-13.

## Euro-standard stacking boxes closed | Handle opening

Outer dimensions (mm)	Internal dimensions (mm)	Volume (L)	Weight (kg)	VPE	Stock items	Colour	Item no.
400 x 300 x 320	368 x 269 x 316	31	1.9	48	✓	●	330-000000095
600 x 400 x 170	569 x 369 x 166	34	1.8	48	✓	○	330-000000017
					✓	●	330-000000019
					-	●	330-000000021
					-	●	330-000000023
600 x 400 x 220	569 x 369 x 216	44	2.2	36	✓	○	330-000000026
					✓	●	330-000000029
					✓	●	330-000000031
					✓	●	330-000000033
600 x 400 x 320	569 x 369 x 316	64	2.9	24	✓	○	330-000000036
					✓	●	330-000000038
					✓	●	330-000000040
					✓	●	330-000000042
600 x 400 x 420	565 x 365 x 416	83	3.9	20	✓	○	330-000000043
					✓	●	330-000000044
					-	●	330-000000045
					-	●	330-000000046

## Euro-standard stacking boxes Clamshell lid

Outer dimensions (mm)	Internal dimensions (mm)	Volume (L)	Weight (kg)	VPE	Stock items	Colour	Item no.
600 x 400			0.9	18	✓	○	330-000000065
					✓	●	330-000000067
					✓	●	330-000000068
					✓	●	330-000000069

## Euro-standard stacking boxes Lid

Outer dimensions (mm)	Internal dimensions (mm)	Volume (L)	Weight (kg)	VPE	Stock items	Colour	Item no.
400 x 300			0.45	90	✓	○	330-000000110
					✓	●	330-000000112
					✓	●	330-000000114
					✓	●	330-000000116
600 x 400			0.9	25	✓	○	330-000000071
					✓	●	330-000000073
					✓	●	330-000000075
					✓	●	330-000000078



### Please note:

The catalogue specifies the external and internal dimensions for all containers. If you require further details, we would be happy to send you a technical data sheet.

In the case of conical containers, the internal dimensions at the bottom differ from those at the top. If necessary, a sample container can be tested in advance.

For further information, please visit: [www.werit.eu](http://www.werit.eu)

## Euro-standard stacking boxes Hinged lid

Outer dimensions (mm)	Internal dimensions (mm)	Volume (L)	Weight (kg)	VPE	Stock items	Colour	Item no.
400 x 300			0.45	90	✓	○	330-000000111
					✓	●	330-000000113
					✓	●	330-000000115
					✓	●	330-000000117
600 x 400			0.9	25	✓	○	330-000000072
					✓	●	330-000000074
					✓	●	330-000000077
					✓	●	330-000000079

## Fitting accessories Support lid and hinged lid

Designation	VPE	Stock items	Colour	Item no.
Hinge latch for lid	100	✓	○	346-000000011
Snap closure for hinged lid	100	✓	○	346-000000016

## Labelling accessories Label holder

Designation	VPE	Stock items	Colour	Item no.
Label holder, short	100	✓	○	346-000000014
Label holder, long	100	✓	○	346-000000015

## Transport accessories Trolley

Outer dimensions (mm)	Payload:	Rollers	Weight (kg)	VPE	Stock items	Colour	Item no.
600 x 400	250	2 steering and 2 swivel castors	2.8	10	✓	●	346-000000006
600 x 400	250	4 Castor wheels	2.9	10	✓	●	346-000000005
600 x 400	250	4 Castor wheels	3.4	10	✓	●	346-000000007



2 swivel castors and 2 fixed castors, 4 swivel castors



4 swivel castors, mesh design



### Please note:

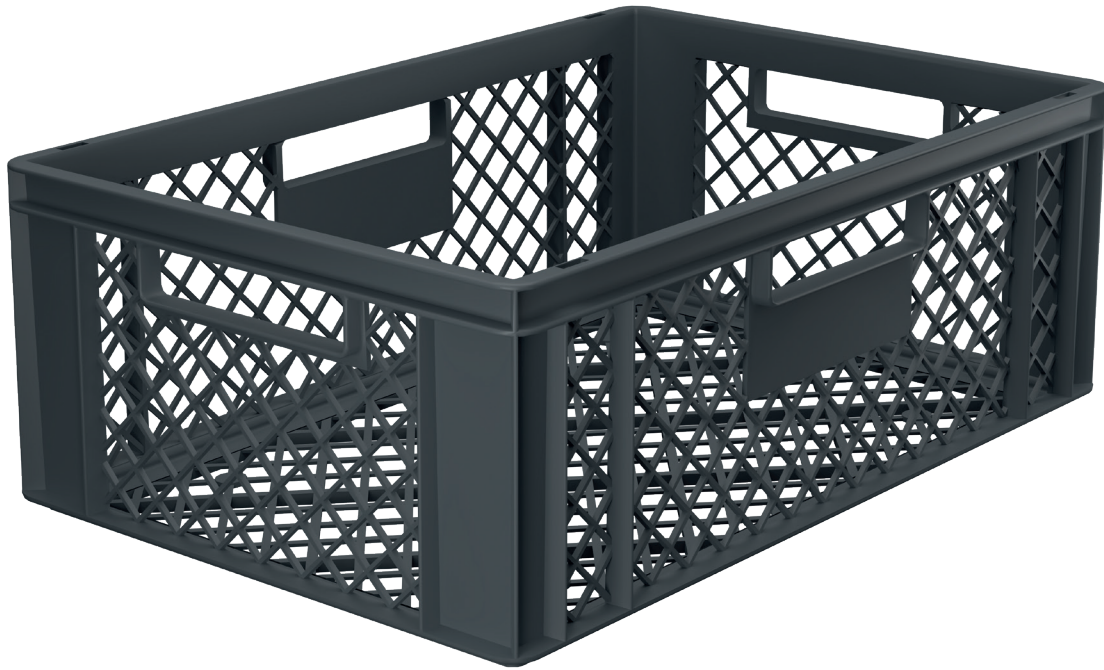
Hinged lids are not compatible with containers with item numbers 252-3254..., 252-3259... and 252-3264...

For further information, please visit: [www.werit.eu](http://www.werit.eu)

# ▼ Euro Standard Stacking Boxes

## Openwork

WERIT Euronorm perforated stacking bins are suitable for use in industry, retail and the food industry. Thanks to their design, they provide optimal air circulation.



### Properties

- ▼ Suitable for manual handling and automatic conveyor systems
- ▼ Easy to clean
- ▼ Optimal air circulation
- ▼ Resistant to acids and alkalis
- ▼ Resistant to cold and heat
- ▼ With through-grips
- ▼ Guaranteed food-safe
- ▼ 100% recyclable

## Euro-standard stacking boxes Openwork base and sides | Handle opening

Outer dimensions (mm)	Internal dimensions (mm)	Volume (L)	Weight (kg)	VPE	Stock items	Colour	Item no.
400 x 300 x 126	368 x 269 x 116	11	0.8	128	✓	○	330-000000098
					✓	●	330-000000099
400 x 300 x 176	368 x 269 x 166	16	0.9	96	✓	○	330-000000100
					✓	●	330-000000101
400 x 300 x 226	368 x 269 x 216	21	1	72	✓	○	330-000000102
					✓	●	330-000000103
600 x 400 x 120	565 x 365 x 116	23	1.2	72	-	○	330-000000047
					✓	●	330-000000048
600 x 400 x 150	565 x 365 x 146	29	1.3	56	-	○	330-000000001
					✓	●	330-000000002
600 x 400 x 170	565 x 365 x 166	33	1.4	48	-	○	330-000000049
					✓	●	330-000000050
600 x 400 x 220	565 x 365 x 216	43	1.7	36	-	○	330-000000051
					✓	●	330-000000052
600 x 400 x 320	565 x 365 x 316	63	2	24	-	○	330-000000053
					✓	●	330-000000054
600 x 400 x 350	565 x 365 x 346	69	2.1	24	-	○	330-000000003
					✓	●	330-000000004
600 x 400 x 426	565 x 365 x 416	83	2.4	20	-	○	330-000000055
					✓	●	330-000000056

## Euro-standard stacking boxes Openwork base closed || Handle opening

Outer dimensions (mm)	Internal dimensions (mm)	Volume (L)	Weight (kg)	VPE	Stock items	Colour	Item no.
400 x 300 x 120	368 x 269 x 116	11	0.9	128	-	○	330-000000104
					✓	●	330-000000105
400 x 300 x 170	368 x 269 x 166	16	1	96	-	○	330-000000106
					✓	●	330-000000107
400 x 300 x 220	368 x 269 x 216	21	1.1	72	-	○	330-000000108
					✓	●	330-000000109
600 x 400 x 120	565 x 365 x 116	23	1.2	72	-	○	330-000000057
					✓	●	330-000000058
					✓	●	330-000000059
600 x 400 x 220	565 x 365 x 216	43	1.7	36	-	○	330-000000060
					✓	●	330-000000061
					✓	●	330-000000062
600 x 400 x 420	565 x 365 x 416	83	2.4	20	-	○	330-000000063
					✓	●	330-000000064

Automation containers

Euronorm Stackable boxes

Stackable boxes with U-shaped edges

Rotary stacking container

Trays and stacking boxes

Meat boxes

Round containers and drums

Large containers

Special colors

Customizations

# ▼ Euro Standard Stacking Boxes

ESD

WERIT Euronorm ESD stacking bins, made from electrically conductive plastic, have been specially designed for the safe transport and storage of electronic components. The design and materials prevent any potential electrostatic discharge. The optimal design of the plastic containers protects the contents from damage, contamination and moisture.



## Properties

- ▼ Suitable for manual handling and automatic conveyor systems
- ▼ Extremely sturdy due to reinforced frame and corner construction
- ▼ Impact-resistant, shatterproof and dimensionally stable
- ▼ Resistant to acids and alkalis
- ▼ Made from electrically conductive plastic (PP-EL)
- ▼ Surface resistance:  $10^4 - 10^6$
- ▼ 100% recyclable

## Euro-standard stacking boxes , ESD | Handlebar

Outer dimensions (mm)	Internal dimensions (mm)	Volume (L)	Weight (kg)	VPE	Stock items	Colour	Item no.
400 x 300 x 120		11		128	-	●	330-000000168
400 x 300 x 170		16		96	-	●	330-000000169
400 x 300 x 220		21		72	-	●	330-000000170
400 x 300 x 270		26		56	-	●	330-000000171
400 x 300 x 320		31		48	-	●	330-000000172
600 x 400 x 50		9		160	-	●	330-000000008
600 x 400 x 75		14		108	-	●	330-000000179
600 x 400 x 120		23		72	-	●	330-000000180
600 x 400 x 170		34		56	-	●	330-000000181
600 x 400 x 220		44		36	-	●	330-000000034
600 x 400 x 320		64		24	-	●	330-000000182

## Euro-standard stacking box , ESD | Clamshell lid

Outer dimensions (mm)	Internal dimensions (mm)	Volume (L)	Weight (kg)	VPE	Stock items	Colour	Item no.
600 x 400					-	●	330-000000070

## Euro-standard stacking box , ESD | Lid

Outer dimensions (mm)	Internal dimensions (mm)	Volume (L)	Weight (kg)	VPE	Stock items	Colour	Item no.
400 x 300					-	●	330-000000173
600 x 400				25	-	●	330-000000175

## Euro-standard stacking box , ESD | Hinged lid

Outer dimensions (mm)	Internal dimensions (mm)	Volume (L)	Weight (kg)	VPE	Stock items	Colour	Item no.
400 x 300					-	●	330-000000174
600 x 400				25	-	●	330-000000176



### Our recommendation: Conductive plastic pallets

The HI-L plastic pallet from WERIT has been specially developed for the automotive industry and its suppliers.

Being a conductive, antistatic plastic pallet, it protects electrostatic-sensitive components from becoming charged. It is therefore the perfect complement to conductive plastic containers.

For further information, please visit:

[www.werit.eu](http://www.werit.eu)



# ▼ Stackable boxes

## U-edge

The go-to choice for the food industry and wherever hygiene and quick cleaning are crucial.



### Properties

- ▼ Simple to clean as it has smooth surfaces and a rounded design
- ▼ Resistant to acids and alkalis
- ▼ Resistant to cold and heat
- ▼ Made from HDPE
- ▼ Guaranteed food-safe
- ▼ 100% recyclable

## Stackable boxes U-shaped edges

Outer dimensions (mm)	Internal dimensions (mm)	Volume (L)	Weight (kg)	VPE	Stock items	Colour	Item no.
400 x 300 x 165	342 x 244 x 162	13	1	112	✓	○	333-000000026
					✓	●	333-000000027
400 x 300 x 215	342 x 244 x 212	18	1.2	72	✓	○	333-000000028
					✓	●	333-000000029
600 x 400 x 165	540 x 345 x 162	30	1.5	48	✓	○	333-000000030
					✓	●	333-000000032
600 x 400 x 215	540 x 345 x 213	40	1.8	36	✓	○	333-000000034
					✓	●	333-000000036
600 x 400 x 320	540 x 345 x 318	60	2.4	24	✓	○	333-000000038
					✓	●	333-000000039
800 x 600 x 220	740 x 540 x 215	80	3.5	18	✓	○	333-000000045
					✓	●	333-000000046
800 x 600 x 320	740 x 540 x 315	120	4.3	12	✓	○	333-000000040
					✓	●	333-000000041

## Stackable boxes U-shaped edges| Clamshell lid

Outer dimensions (mm)	Internal dimensions (mm)	Volume (L)	Weight (kg)	VPE	Stock items	Colour	Item no.
400 x 300			0.5	32	✓	○	333-000000012
					✓	●	333-000000013
600 x 400			0.95	15	✓	○	333-000000042
					✓	●	333-000000043



### Our recommendation: Customised container labelling

With custom branding, your WERIT stacking bins with U-edges can be perfectly tailored to your company's corporate identity.

For further information, please visit: [www.werit.eu](http://www.werit.eu)

# ▼ Rotary stacking container

DSB-N

WERIT DSB-N stackable containers are ideal for light industrial use. The containers can be stacked with or without lids and are very sturdy thanks to their robust construction.

The DSB-N containers can be stacked when full and nested when empty by rotating them through 180°. They save 65% in volume during storage or transport.



Base and sides  
openwork



Base closed,  
openwork sides

## Properties

- ▼ Suitable for manual handling and automatic conveyor systems
- ▼ Impact-resistant, shatterproof and dimensionally stable
- ▼ Easy to clean thanks to smooth surfaces
- ▼ Resistant to acids and alkalis
- ▼ Resistant to cold and heat
- ▼ With ergonomic handles
- ▼ 65% reduction in volume
- ▼ Made from HDPE
- ▼ Guaranteed food-safe
- ▼ 100% recyclable

## Rotary stacking container DSB-N | Closed

Outer dimensions (mm)	Internal dimensions (mm)	Volume (L)	Weight (kg)	VPE	Stock items	Colour	Item no.
400 x 300 x 170	328 x 270 x 158	14	0.8	280	✓	●	331-000000078
400 x 300 x 220	328 x 270 x 208	18	1	200	✓	●	331-000000080
400 x 300 x 270	328 x 270 x 258	23	1.2	160	✓	●	331-000000081
600 x 400 x 150	482 x 365 x 147	25	1.5	152	✓	○	331-000000021
					✓	●	331-000000022
					✓	●	331-000000023
600 x 400 x 200	482 x 365 x 196	32	1.8	140	✓	○	331-000000024
					✓	●	331-000000025
					✓	●	331-000000026
600 x 400 x 250	482 x 365 x 248	40	2.2	100	✓	○	331-000000027
					✓	●	331-000000028
					✓	●	331-000000029
600 x 400 x 300	482 x 365 x 297	50	2.4	80	✓	○	331-000000030
					✓	●	331-000000031
					✓	●	331-000000032
600 x 400 x 350	482 x 365 x 348	60	2.7	60	✓	○	331-000000033
					✓	●	331-000000034
					✓	●	331-000000035

## Rotary stacking container DSB-N | Openwork base and sides

Outer dimensions (mm)	Internal dimensions (mm)	Volume (L)	Weight (kg)	VPE	Stock items	Colour	Item no.
400 x 300 x 170	328 x 270 x 158	14	0.7	280	-	●	331-000000082
400 x 300 x 220	328 x 270 x 208	18	0.9	200	-	●	331-000000083
400 x 300 x 270	328 x 270 x 258	23	1.1	160	-	●	331-000000084
600 x 400 x 150	482 x 365 x 147	25	1.3	152	✓	○	331-000000037
					✓	●	331-000000038
600 x 400 x 200	482 x 365 x 196	32	1.5	140	✓	○	331-000000039
					✓	●	331-000000040
600 x 400 x 250	482 x 365 x 248	40	1.9	100	✓	○	331-000000042
					✓	●	331-000000044
600 x 400 x 300	482 x 365 x 297	50	2.1	80	✓	○	331-000000045
					✓	●	331-000000046
600 x 400 x 350	482 x 365 x 348	60	2.3	60	✓	○	331-000000047
					✓	●	331-000000048



### Please note

The mesh size is 10 x 10 mm at the bottom and 10 x 15 mm on the sides

For further information, please visit: [www.werit.eu](http://www.werit.eu)

## Rotary stacking container DSB-N | Bottom closed | Openwork sides

Outer dimensions (mm)	Internal dimensions (mm)	Volume (L)	Weight (kg)	VPE	Stock items	Colour	Item no.
400 x 300 x 170	328 x 270 x 158	14	0.8	280	-	●	331-000000085
400 x 300 x 220	328 x 270 x 208	18	1	200	-	●	331-000000086
400 x 300 x 270	328 x 270 x 258	23	1.2	160	-	●	331-000000088
600 x 400 x 150	482 x 365 x 147	25	1.4	152	-	○	331-000000050
					-	●	331-000000051
600 x 400 x 200	482 x 365 x 196	32	1.6	140	-	○	331-000000052
					✓	●	331-000000053
600 x 400 x 250	482 x 365 x 248	40	2	100	-	○	331-000000056
					✓	●	331-000000057
600 x 400 x 300	482 x 365 x 297	50	2.2	80	-	○	331-000000058
					✓	●	331-000000059
600 x 400 x 350	482 x 365 x 348	60	2.4	60	-	○	331-000000060
					✓	●	331-000000061

## Rotary stacking container Clamshell lid

Outer dimensions (mm)	Internal dimensions (mm)	Volume (L)	Weight (kg)	VPE	Stock items	Colour	Item no.
400 x 300			0.45	25	✓	●	331-000000089
600 x 400			0.9	25	✓	○	331-000000065
					✓	●	331-000000066
					✓	●	331-000000067

## Rotary stacking container Crocodile lid

Outer dimensions (mm)	Internal dimensions (mm)	Volume (L)	Weight (kg)	VPE	Stock items	Colour	Item no.
600 x 400			0.9	25	✓	●	331-000000076

## Fitting accessories Crocodile lid

Designation	VPE	Stock items	Colour	Item no.
Lead	100	✓	●	346-000000013

## Transport accessories Trolley

Outer dimensions (mm)	Payload:	Rollers	Weight (kg)	VPE	Stock items	Colour	Item no.
600 x 400	250	2 swivel castors and 2 fixed castors	2.8	10	✓	●	346-000000006
600 x 400	250	4 Castor wheels	2.9	10	✓	●	346-000000005

## Assembly fittings Trolley | Centring bracket

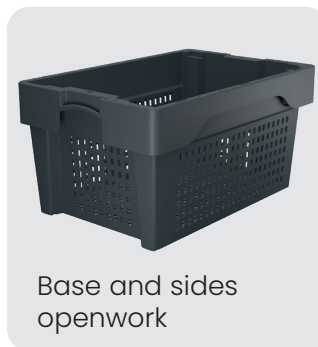
VPE	Stock items	Colour	Item no.
1 set (4 pieces each)	✓	●	346-000000010



**65%**  
Volume  
reduction

# ▼ Rotary stacking container

TwistBox



with a ribbed base  
(medium)  
(no image shown)

## Properties

- ▼ Suitable for manual handling and automatic conveyor systems
- ▼ Impact-resistant, shatterproof and dimensionally stable
- ▼ Easy to clean thanks to smooth surfaces
- ▼ Resistant to acids and alkalis
- ▼ Resistant to cold and heat
- ▼ With ergonomic handles
- ▼ 65% reduction in volume
- ▼ Made from HDPE
- ▼ Guaranteed food-safe
- ▼ 100% recyclable

## Rotary stacking container TwistBox | Closed

Outer dimensions (mm)	Internal dimensions (mm)	Volume (L)	Weight (kg)	VPE	Stock items	Colour	Item no.
600 x 400 x 150	512 x 365 x 147	28	1.6	124	✓	●	331-000000068
600 x 400 x 200	512 x 365 x 197	36	1.9	120	✓	●	331-000000069
600 x 400 x 250	512 x 365 x 247	46	2.3	92	✓	●	331-000000070
600 x 400 x 300	512 x 365 x 297	56	2.6	76	✓	●	331-000000071
600 x 400 x 350	512 x 365 x 347	66	3	64	✓	●	331-000000072
600 x 400 x 400	512 x 365 x 397	76	3.3	56	✓	●	331-000000073

## Rotary stacking container TwistBox | Openwork base and sides

Outer dimensions (mm)	Internal dimensions (mm)	Volume (L)	Weight (kg)	VPE	Stock items	Colour	Item no.
600 x 400 x 150	512 x 365 x 147	28	1.3	124	-	●	331-000000209
600 x 400 x 200	512 x 365 x 197	36	1.6	120	-	●	331-000000110
600 x 400 x 250	512 x 365 x 247	46	1.9	92	-	●	331-000000212
600 x 400 x 300	512 x 365 x 297	56	2.2	76	-	●	331-000000210
600 x 400 x 350	512 x 365 x 347	66	2.5	64	-	●	331-000000211
600 x 400 x 400	512 x 365 x 397	76	2.8	56	-	●	331-000000122

## Rotary stacking container Clamshell lid

Outer dimensions (mm)	Internal dimensions (mm)	Volume (L)	Weight (kg)	VPE	Stock items	Colour	Item no.
600 x 400			0.9	25	✓	●	331-000000074

## Rotary stacking container Crocodile lid

Outer dimensions (mm)	Internal dimensions (mm)	Volume (L)	Weight (kg)	VPE	Stock items	Colour	Item no.
600 x 400			0.9	25	✓	●	331-000000076

## Fitting accessories Crocodile lid

Designation	VPE	Stock items	Colour	Item no.
Lead	100	✓	●	346-000000013



### Please note

The mesh size is 10 x 10 mm at the bottom and 10 x 15 mm on the sides

For further information, please visit: [www.werit.eu](http://www.werit.eu)

# ▼ Rotary stacking container

## U-edge

WERIT stackable containers with a U-shaped rim are particularly suitable for use in the food industry and can be stacked whilst full, with or without lids. When empty, they can simply be nested inside one another. The large corner radii and smooth base make cleaning particularly easy, whilst the all-round U-shaped rim ensures maximum comfort.



### Properties

- ▼ Suitable for manual handling and automatic conveyor systems
- ▼ Impact-resistant, shatterproof and dimensionally stable
- ▼ Easy to clean thanks to smooth surfaces
- ▼ Resistant to acids and alkalis
- ▼ Resistant to cold and heat
- ▼ 65% reduction in volume
- ▼ Made from HDPE
- ▼ Guaranteed food-safe
- ▼ 100% recyclable

## Stackable boxes U-edge

Outer dimensions (mm)	Internal dimensions (mm)	Volume (L)	Weight (kg)	VPE	Stock items	Colour	Item no.
600 x 400 x 220	480 x 349 x 213	30	1.8	120	✓	○	331-000000008
					✓	●	331-000000009
600 x 400 x 325	480 x 349 x 319	50	2.1	80	✓	○	331-000000013
					✓	●	331-000000099
800 x 600 x 220	638 x 540 x 217	80	4.1	40	✓	○	331-000000007
800 x 600 x 330	638 x 540 x 322	110	5.5	30	✓	○	331-000000018
800 x 600 x 505	628 x 540 x 496	170	8	20	✓	○	331-000000019

## Rotary stacking container U-shaped edge | with feet

Outer dimensions (mm)	Internal dimensions (mm)	Volume (L)	Weight (kg)	VPE	Stock items	Colour	Item no.
800 x 600 x 600	628 x 540 x 496	170	8.8	16	✓	○	331-000000092

## Stackable boxes U-shaped edges | Clamshell lid

Outer dimensions (mm)	Internal dimensions (mm)	Volume (L)	Weight (kg)	VPE	Stock items	Colour	Item no.
600 x 400			1.1	25	✓	○	331-000000001
					✓	●	331-000000002
800 x 600			2.7	10	✓	○	331-000000020

## Transport accessories Trolley

Outer dimensions (mm)	Payload:	Rollers	Weight (kg)	VPE	Stock items	Colour	Item no.
800 x 600	250	4 Castor wheels	4.1	10	✓	●	346-000000001*
800 x 600	250	4 Castor wheels	4.1	10	✓	●	346-000000002

\* specifically designed to fit the base dimensions of the containers (800 x 600 mm).



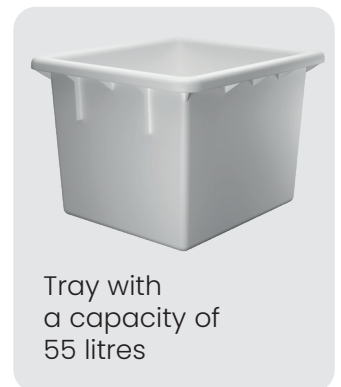
With legs, clamshell lid



Trolley 800 x 600 mm, 4 Castor wheels

## ▼ Trays and stacking boxes

For custom applications, WERIT offers specialised container solutions in a range of sizes, heights and base designs. These containers are used, amongst other things, as mixing troughs, basins, confectionery containers or specialised containers in the automotive industry.



### Properties

- ▼ Easy to clean thanks to smooth surfaces and the special design of the container
- ▼ Suitable for automatic cleaning systems
- ▼ Made from HDPE
- ▼ Guaranteed food-safe
- ▼ 100% recyclable

## TRAYS AND STACKING BOXES Tray

Outer dimensions (mm)	Internal dimensions (mm)	Volume (L)	Weight (kg)	VPE	Stock items	Colour	Item no.
355 x 255 x 40	350 x 250 x 38	3	0.3	50	✓	○	332-000000001
440 x 320 x 155	395 x 275 x 150	12	0.8	200	✓	○	332-000000002
610 x 440 x 150	550 x 375 x 145	25	1.3	200	✓	○	332-000000003
710 x 490 x 185	635 x 420 x 175	40	1.7	200	✓	○	332-000000004
535 x 475 x 380	450 x 395 x 360	55	3.3	40	✓	○	332-000000005
					✓	●	332-000000006

## Trays and stacking boxes Tray | Clamshell lid

Outer dimensions (mm)	Version	Weight (kg)	VPE	Stock items	Colour	Item no.
535 x 475	for 55 litres	1.1	11	✓	○	332-000000007
				✓	●	332-000000008

## Trays and stacking boxes Stacking boxes

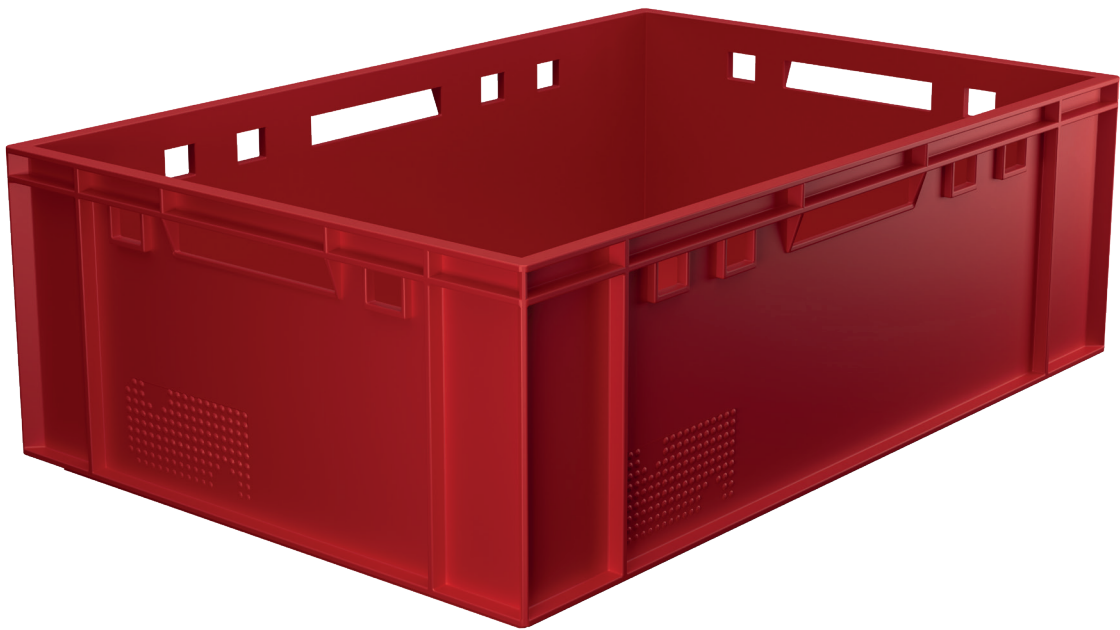
Outer dimensions (mm)	Internal dimensions (mm)	Volume (L)	Weight (kg)	VPE	Stock items	Colour	Item no.
450 x 255 x 105	400 x 210 x 100	8	0.6	150	✓	○	333-000000003
					✓	●	333-000000004
450 x 295 x 70	400 x 245 x 65	7	0.7	200	✓	○	333-000000005
450 x 295 x 125	400 x 245 x 120	10	0.8	100	✓	○	333-000000001
					✓	●	333-000000002
465 x 360 x 82	420 x 315 x 80	10	0.8	150	✓	○	333-000000007
525 x 455 x 110	470 x 400 x 105	18	1.4	80	✓	○	333-000000008
					✓	●	333-000000009
525 x 455 x 165	470 x 400 x 160	30	1.8	48	✓	○	333-000000022
					✓	●	333-000000023
525 x 455 x 220	470 x 400 x 215	40	2.1	40	✓	○	333-000000024
					✓	●	333-000000025
580 x 360 x 100	525 x 310 x 95	15	1.3	80	✓	○	333-000000020
					✓	●	333-000000021
580 x 360 x 215	525 x 310 x 210	35	2	40	✓	○	333-000000016
					✓	●	333-000000017
580 x 470 x 120	530 x 430 x 115	26	1.7	60	✓	○	333-000000014
730 x 480 x 90	685 x 430 x 80	20	2.1	50	-	○	345-000000012

## Trays and stacking boxes Stacking boxes | Clamshell lid

Outer dimensions (mm)	Version	Weight (kg)	VPE	Stock items	Colour	Item no.
525 x 455	for 18 l, 30 l and 40 l	0.9	16	✓	○	333-000000010
				✓	●	333-000000011
580 x 360	for 15 l and 35 l	1	17	✓	○	333-000000018
				✓	●	333-000000019

## ▼ Meat boxes

WERIT meat boxes are standardised transport containers used in the meat and sausage processing industry and in the retail sector, and comply with DIN 55423.



### Properties

- ▼ Suitable for manual handling and automatic conveyor systems
- ▼ Impact-resistant, shatterproof and dimensionally stable
- ▼ Easy to clean thanks to smooth surfaces
- ▼ Suitable for automatic cleaning systems
- ▼ Side openings for ventilating the goods
- ▼ Made from HDPE (327l made from PP)
- ▼ Guaranteed food-safe
- ▼ 100% recyclable

## Meat boxes

Outer dimensions (mm)	Internal dimensions (mm)	Volume (L)	Weight (kg)	VPE	Stock items	Colour	Item no.
600 x 400 x 125	565 x 365 x 120	25	1.5	60	✓	●	336-000000001
					-	●	336-000000002
600 x 400 x 200	565 x 365 x 195	40	2	40	✓	○	336-000000003
					✓	●	336-000000004
					✓	●	336-000000005
					✓	●	336-000000006
					✓	●	336-000000007
600 x 400 x 300	565 x 365 x 295	60	3	28	✓	●	336-000000009
					✓	●	336-000000010

## Meat boxes Lid

Outer dimensions (mm)	Internal dimensions (mm)	Volume (L)	Weight (kg)	VPE	Stock items	Colour	Item no.
600 x 400			1.1	25	✓	●	330-000000076

## Transport accessories Trolley

Outer dimensions (mm)	Payload:	Rollers	Weight (kg)	VPE	Stock items	Colour	Item no.
600 x 400	250	2 steering and 2 swivel castors	2.8	10	✓	●	346-000000006
600 x 400	250	4 Castor wheels	2.9	10	✓	●	346-000000005



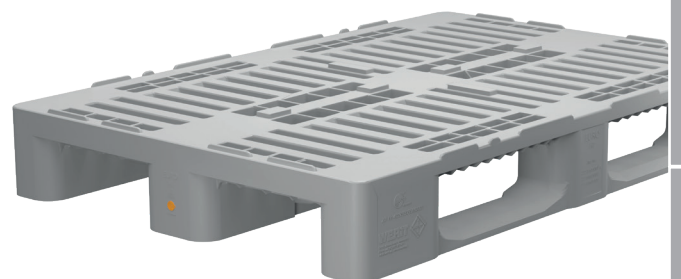
### Our recommendation: Euro H1 hygiene pallet

Combine WERIT meat boxes with the WERIT EURO H1 hygiene pallet. The EURO H1 hygiene pallet is the plastic pallet used by the European food industry.

WERIT has been an authorised manufacturer of this plastic pallet for over 20 years.

For further information, please visit:

[www.werit.eu](http://www.werit.eu)



## ▼ Round containers | Drums

Tailored to meet the high standards of the food industry, these product ranges impress with their durable and robust quality.



65-litre round container



50-litre drum with lid

### Properties

- ▼ Easy to clean thanks to smooth surfaces and the special design of the container
- ▼ Stackable, with lids on top (except 334-000000001 and 334-000000002)
- ▼ Sturdy handles
- ▼ Made from HDPE
- ▼ Guaranteed food-safe
- ▼ 100% recyclable

## Round containers | Drum Round containers

Height (mm)	Diameter (mm)	Volume (L)	Weight (kg)	VPE	Stock items	Colour	Item no.
335	590	65	2.4	58	✓	○	334-000000001
385	628	85	3.2	54	✓	○	334-000000002

## Round containers | Drums Drums

Height (mm)	Diameter (mm)	Volume (L)	Weight (kg)	VPE	Stock items	Colour	Item no.
445	420	40	1.7	80	✓	○	334-000000007
540	420	50	2	75	✓	○	334-000000008
530	515	75	3.7	36	✓	○	334-000000006
733	515	110	5.5	24	✓	○	334-000000003

## Round containers | Drums Drums | Clamshell lids and Snap-on lids

Diameter (mm)	Version	Weight (kg)	VPE	Stock items	Colour	Item no.
428	Lids for 40 and 50 litre	0.3		✓	○	334-000000009
525	Snap-on lids for 75 and 110 litres	0.9		✓	○	334-000000005
534	Lids for 75 and 110 litre	0.9		✓	○	334-000000004

## Transport accessories Chassis

Diameter (mm)	Weight (kg)	VPE	Stock items	Colour	Item no.
340 - 435 x 70	3.6		✓	○	346-000000020



Chassis for drums  
40–110 l, adjustable



### We will be happy to advise you

Do you have any questions about our products?

Our customer service team will be happy to help you:

[rtp.de@werit.eu](mailto:rtp.de@werit.eu)

## ▼ Large containers

WERIT large containers are the ideal choice for heavy-duty applications, such as in the meat industry, or as storage containers for foodstuffs, or for the storage and transport of spices, additives or other goods.



### Properties

- ▼ Simple to clean as it has smooth surfaces and a rounded design
- ▼ Guaranteed food-safe
- ▼ Stackable (210 l and 360 l)
- ▼ 100% recyclable
- ▼ Suitable for forklift access: 140 l, 210 l and 360 l with feet and castors
- ▼ Made from HDPE

## Large containers

Outer dimensions (mm)	Internal dimensions (mm)	Volume (L)	Weight (kg)	VPE	Stock items	Colour	Item no.
800 x 600 x 405	720 x 515 x 400	140	10.4	10	✓	○	335-000000006

## Large containers Corrugated bottom

Outer dimensions (mm)	Version	Volume (L)	Weight (kg)	VPE	Stock items	Colour	Item no.
800 x 600 x 415	720 x 515 x 400	140	11.4	10	✓	○	335-000000007

## Large containers 2 swivel castors and 2 fixed castors

Outer dimensions (mm)	Internal dimensions (mm)	Volume (L)	Weight (kg)	VPE	Stock items	Colour	Item no.
800 x 600 x 550	720 x 515 x 400	140	15.0	10	✓	○	335-000000008

## Large containers 4 Swivel castors

Outer dimensions (mm)	Internal dimensions (mm)	Volume (L)	Weight (kg)	VPE	Stock items	Colour	Item no.
800 x 600 x 550	720 x 515 x 400	140	15.0	10	✓	○	335-000000009

## Large containers Feet

Outer dimensions (mm)	Internal dimensions (mm)	Volume (L)	Weight (kg)	VPE	Stock items	Colour	Item no.
800 x 600 x 510	720 x 515 x 400	140	12	10	✓	○	335-000000010
790 x 605 x 685	725 x 540 x 575	210	8.9	22	✓	○	335-000000001
945 x 725 x 830	875 x 655 x 705	360	17.4	6	✓	○	335-000000003

## Large containers Clamshell lid

Outer dimensions (mm)	Version	Weight (kg)	VPE	Stock items	Colour	Item no.
800 x 600	for 140-litre containers	3	10	✓	○	335-000000011
804 x 625 x 40	for 210-litre containers	3	10	✓	○	335-000000002
952 x 745 x 47	for 360-litre containers	5	10	✓	○	335-000000004

## Transport accessories Trolley

Version	VPE	Stock items	Colour	Item no.
for 210-litre containers, galvanised		✓	○	346-000000008
for 360-litre containers, galvanised		✓	○	346-000000009



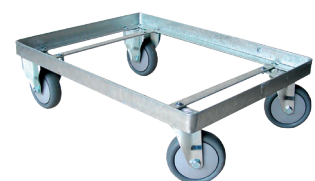
Large container, 140 litres with a clamshell lid



140-litre large container with feet and clamshell lid



Large container, 210 litres with a clamshell lid

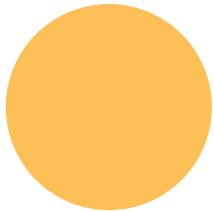


Chassis for 360-litre container

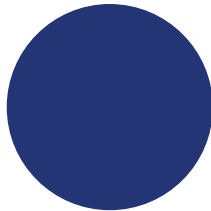
## ▼ Special colours

WERIT plastic containers are available in a wide range of standard colours. We can also accommodate specific colour preferences upon request.

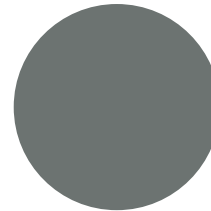
You can find the colours available for our stock items in the product details for each item. The colours shown are for guidance only and are not binding!



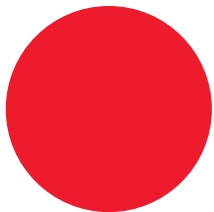
RAL 1023  
Standard amber



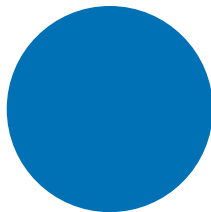
RAL 5002  
Ultramarine  
blue



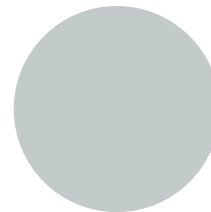
RAL 7012  
Basalt grey



RAL 2002  
Blood orange



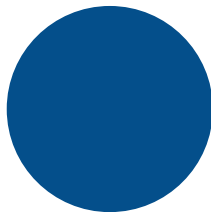
RAL 5015  
Sky blue



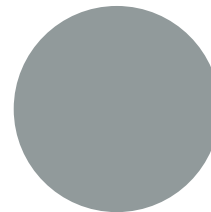
RAL 7035  
Light grey



RAL 2010  
Bright orange



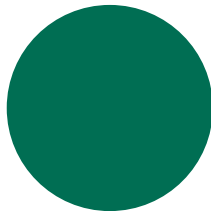
RAL 5017  
Standard blue



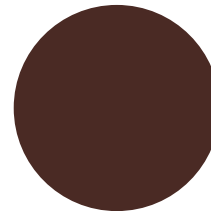
RAL 7042  
Standard grey  
A



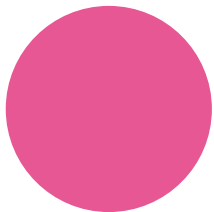
RAL 3020  
Standard red



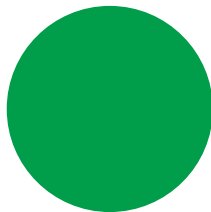
RAL 6016  
Turquoise



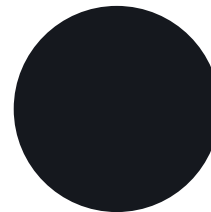
RAL 8017  
Chocolate  
brown



RAL 4003  
Erica violet



RAL 6018  
Yellow-  
ish-green



RAL 9011  
Graphite black

# ▼ Customizations

In our specialised finishing centre, WERIT reusable transport packaging can be flexibly adapted to meet customer requirements. Immediately after the manufacturing process, the products are transferred to the dedicated finishing centre for the subsequent stages of production:



Hot stamping | Customer logo



Hot stamping | Standard characters, alphanumeric



Machine embossing



Barcode



Label holder, long



Label holder, short



Slide closure



Press stud



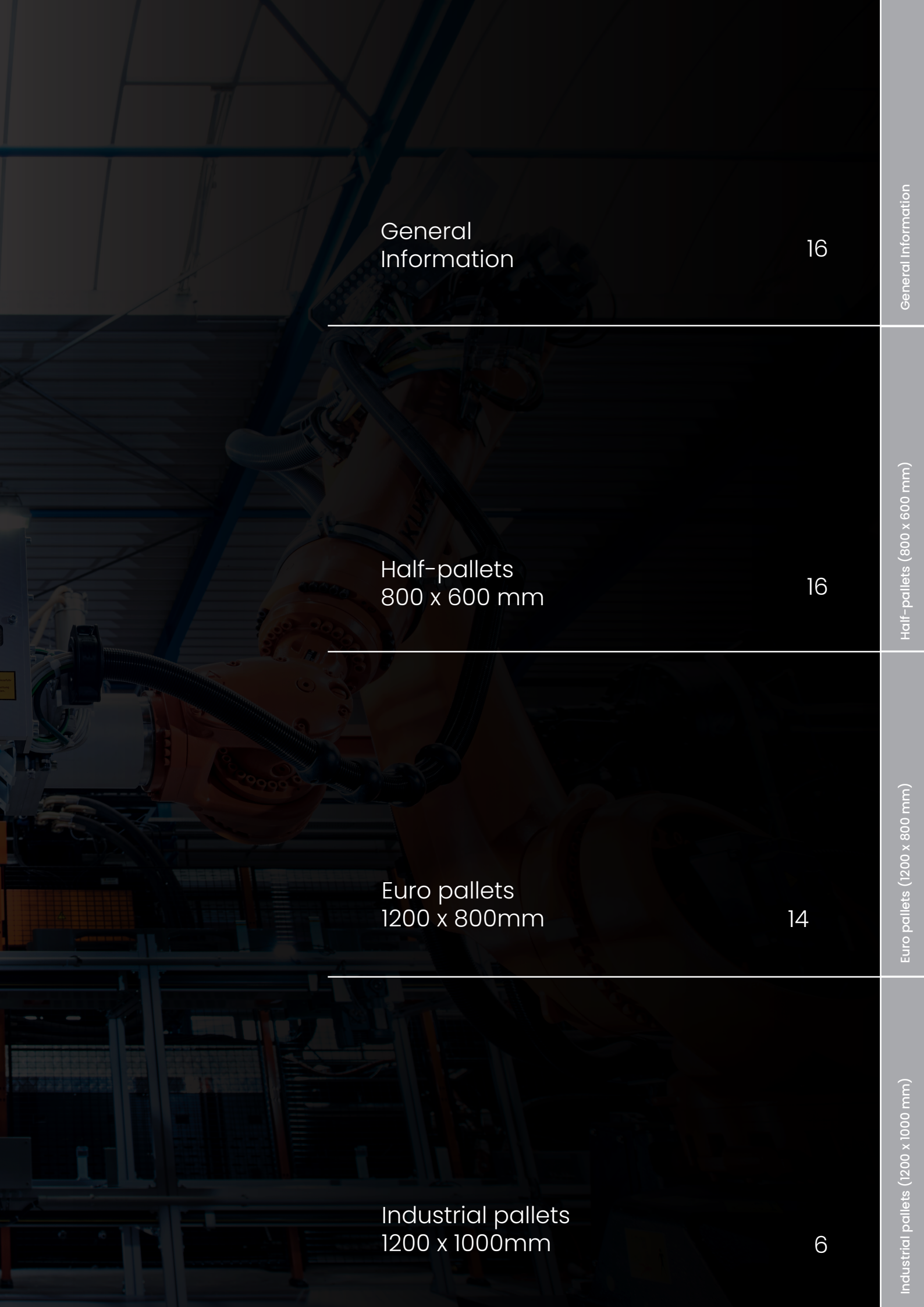
Lead

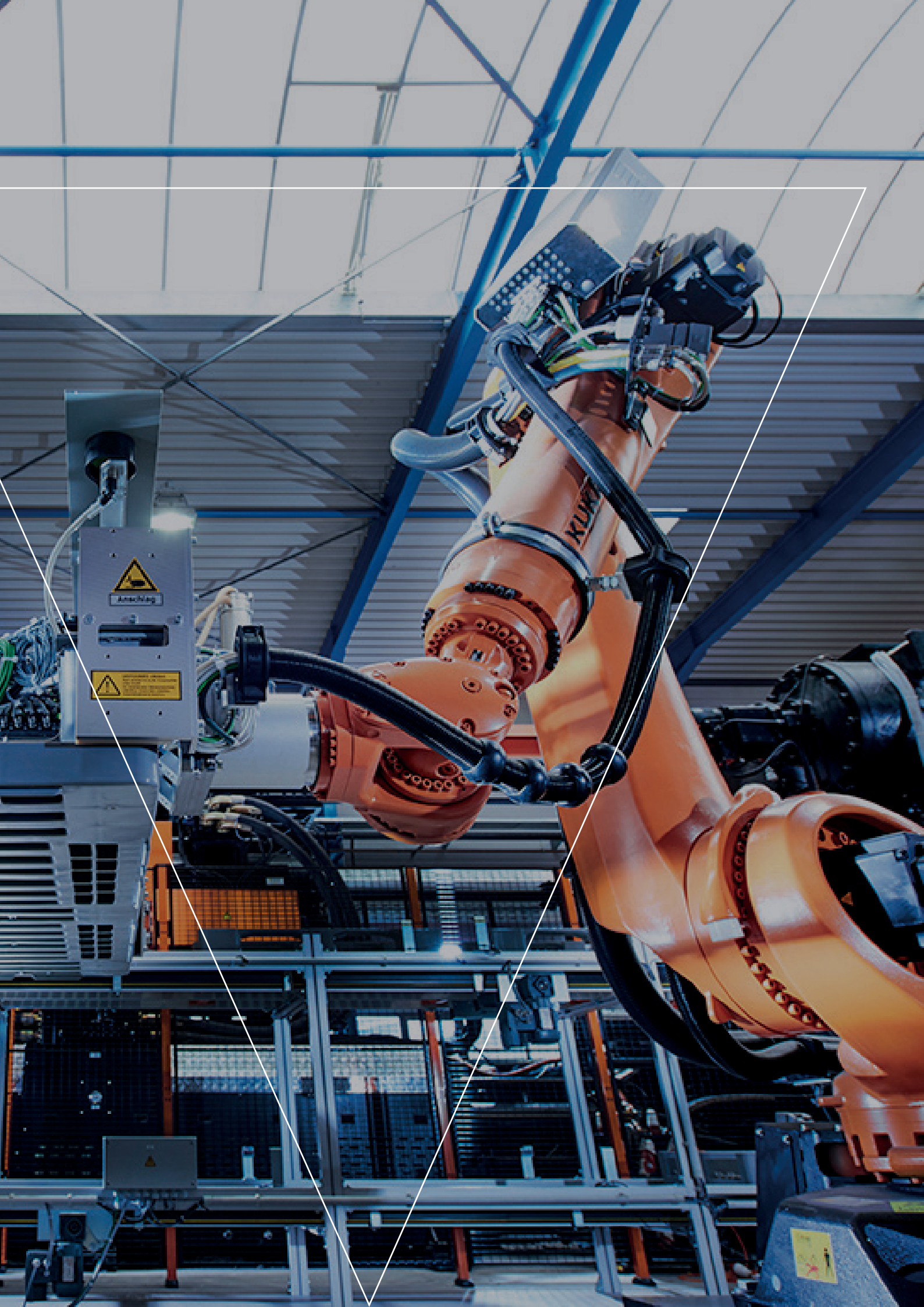
## Further customisation options

- ▼ Punching
- ▼ Drilling
- ▼ Sawing
- ▼ Milling



## Plastic pallets







## ▼ Advantages

There are so many good reasons to use a WERIT plastic pallet:

### Costs

- ▼ Reduced transport costs thanks to its low weight
- ▼ Lower export costs
- ▼ No IPPC ISPM 15 treatment required
- ▼ Smooth operations
- ▼ No repairs required
- ▼ Sustainable, durable products made from recyclable plastic

### Weight

- ▼ Low energy consumption during manufacture and transport
- ▼ Making staff's work easier
- ▼ High load-bearing capacity and stability thanks to its special design and expansion options

### Function

- ▼ Durable – meaning: high turnover in distribution
- ▼ Ideally suited for automated warehousing and order-picking systems
- ▼ Precise dimensions and shape enable optimal production processes

### Safety

- ▼ Safe handling thanks to non-slip edges and central locking mechanisms
- ▼ No static build-up due to the use of conductive plastic
- ▼ Optimal cleaning performance thanks to smooth surfaces
- ▼ Process reliability through dimensional stability

# ▼ A compelling product

## The WERIT Plastic Pallet

WERIT uses virgin HDPE or recycled HDPE in the manufacture of its plastic pallets. This is one of the many reasons for the durability and quality of these products.

The various product variants, tailored to the market, are manufactured using state-of-the-art production processes. The result is a load carrier that fully

meets the industry's requirements and seamlessly links the various stages of the logistics chain. As the plastic pallets require no repair or maintenance, the process remains efficient and runs smoothly.

## Material

Among other things, a distinction is made between HDPE and LDPE.

HDPE (or PE-HD) consists of sparsely branched polymer chains with a high density of between 0.94 g/cm<sup>3</sup> and 0.97 g/cm<sup>3</sup> ('HD' stands for 'high density'). LDPE (PE-LD) consists of highly branched polymer chains with a low density of between 0.915 g/cm<sup>3</sup> and 0.935 g/cm<sup>3</sup> ('LD' stands for 'low density').

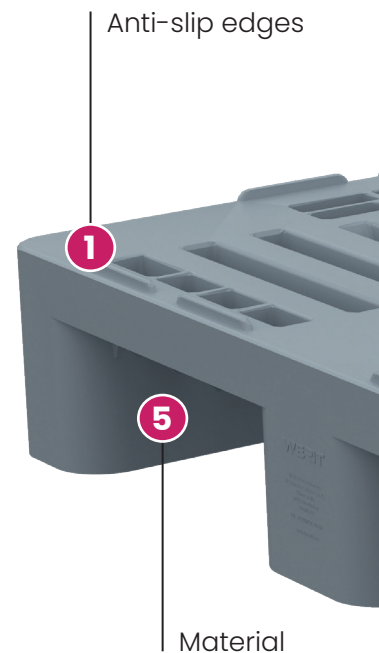
### Virgin HDPE

HDPE is produced industrially through the polymerisation of ethylene. Originally, this raw material was milky and waxy. It has been used commercially since 1957 in piping systems, for cable insulation and in packaging materials. Today, it is a highly advanced thermoplastic with ideal forming properties. This plastic can be optimally tailored to specific requirements through the addition of additives. HDPE retains its shape at temperatures ranging from -40 to +70 °C and is resistant to most acids, alkalis and chemicals.

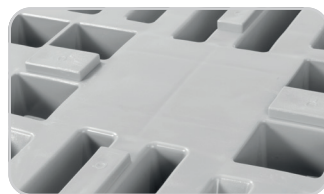
### Recycled HDPE

This raw material is high-quality, single-grade HDPE regranulate. The sources of these recycled granulates are known, so quality is assured. During the processing of this HDPE regranulate, all impurities are removed.

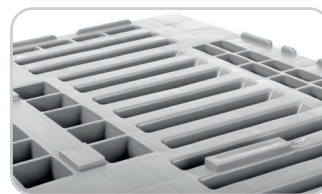
Internal quality assurance and strict production guidelines ensure that WERIT HDPE pallets are of a consistently high quality.



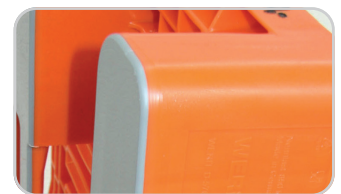
**1** **Anti-slip edges:**  
Prevent goods from shifting during transport and secure the pallets in the empty stack



**2** **Centre lock:**  
Prevents e-box systems from sliding during transport



**3** **Upper deck:**  
The perforated design makes the tray lighter and promotes air circulation during the cooling process

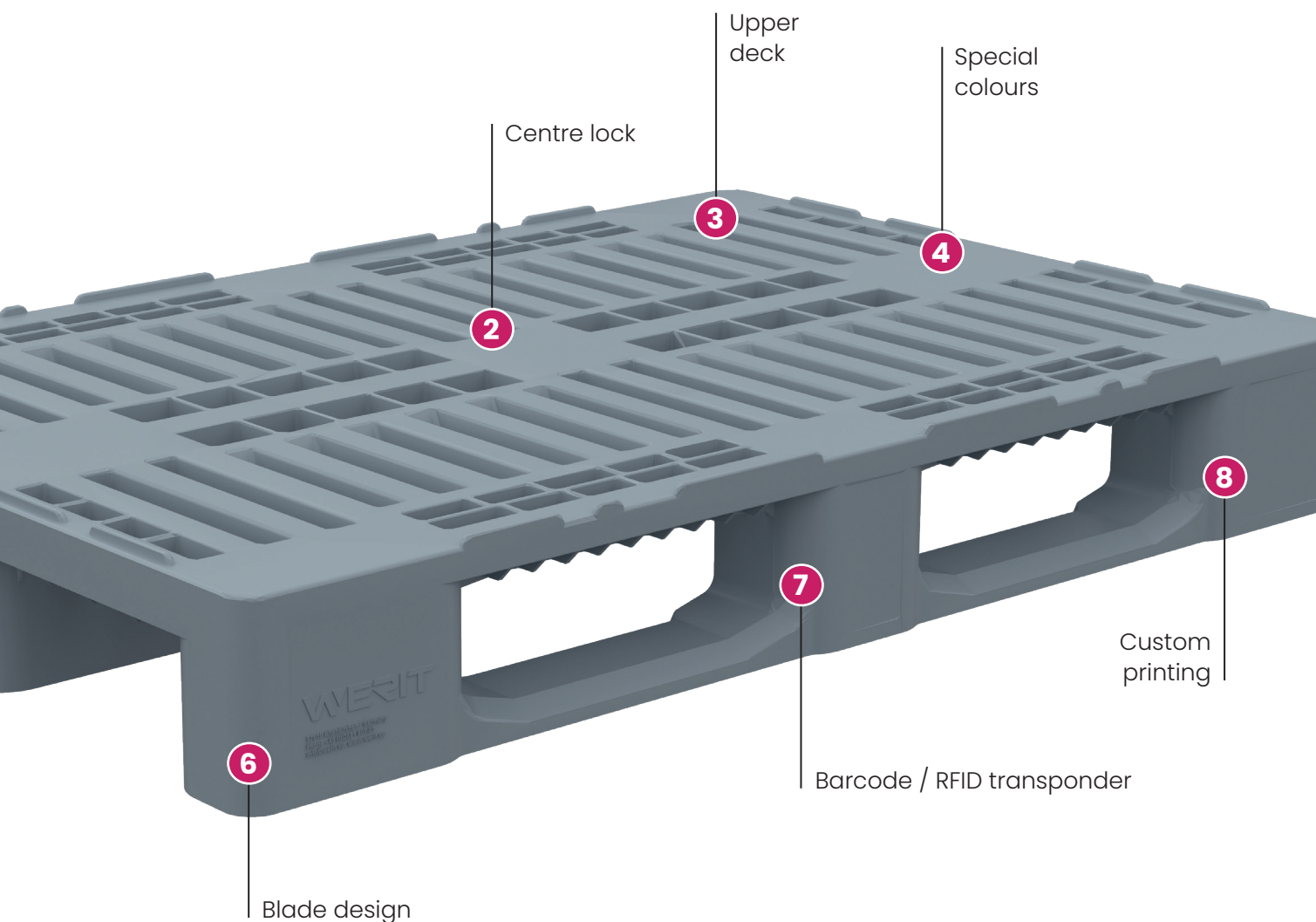


**4** **Special colours:**  
For orders of 500 pallets or more, custom colours etc. are available

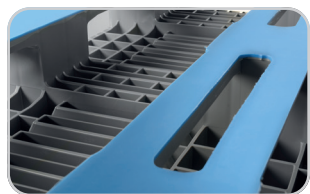
### With a Focus on the Environment

For WERIT, sustainability has been an integral part of the company's philosophy since its foundation in 1949 and is simply a matter of course. Responsibility towards our employees, commitment to our business partners and ensuring the company's future are the values that guide us. This approach fosters a performance-oriented culture within the company, leading to stable partnerships with our customers and suppliers.

- ▼ Quality management and efficient production processes
- ▼ Responsible use of resources and environmental protection
- ▼ Solutions for specific requirements
- ▼ Technical consultancy, e.g. on the use of chemicals



**5**  
**Material:**  
 Made exclusively from single-origin, high-quality materials. HDPE and PP are processed in both virgin and recycled forms



**6**  
**Blade design**  
 Welded, open or with an anti-slip coating



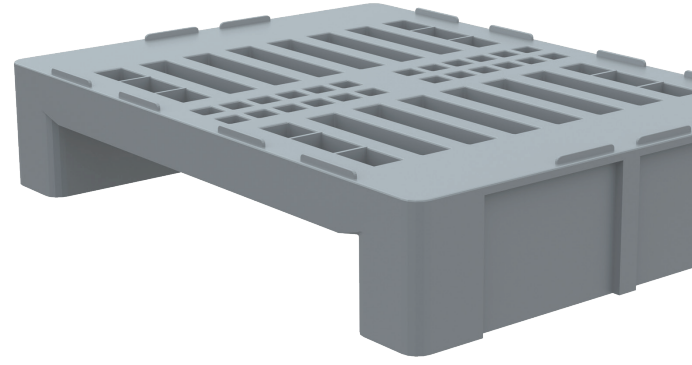
**7**  
**Barcode / RFID - transponder:**  
 To track the transport routes of the goods



**8**  
**Custom printing**  
 Names can be used for identification, with logos, labelling or numbering available depending on the quantity

# ▼ H2 Hygiene Pallet

with anti-slip edge | 800 x 600 mm



## Use | Requirement

The H2 plastic half-pallet is the ideal complement to the EURO H1 hygiene pallet and the E-box system.

## In particular

- ▼ Excellent cleaning performance, just like the EURO H1
- ▼ Safe handling of all standard box systems
- ▼ Dimensionally stable from -40 °C to +70 °C

## Options

- ▼ Centre lock
- ▼ Edge options: none, 7 mm

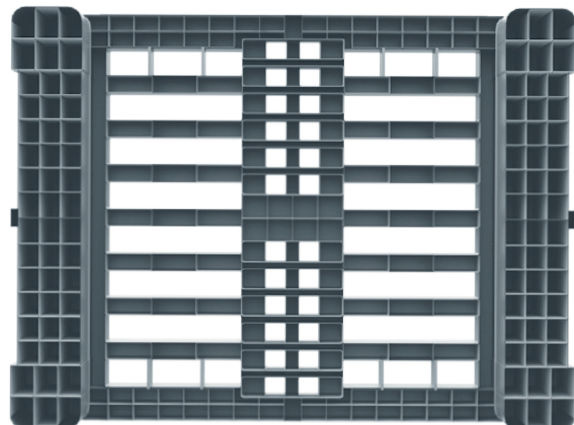
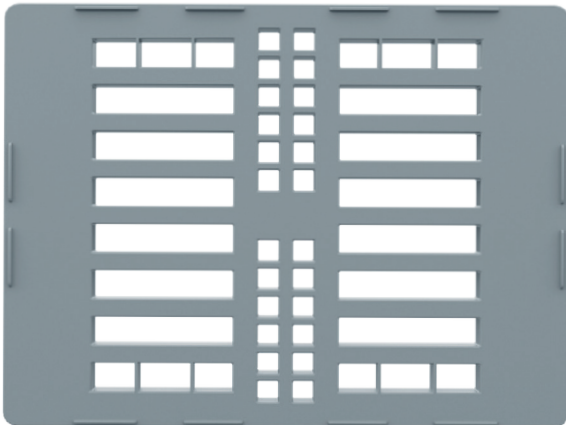
## Loading quantities (units / approximate figures)

### Container

Container 20':	384
Container 40':	780
Container 40' High Cube:	880
Standard 45-foot high-cube container trailer:	1020

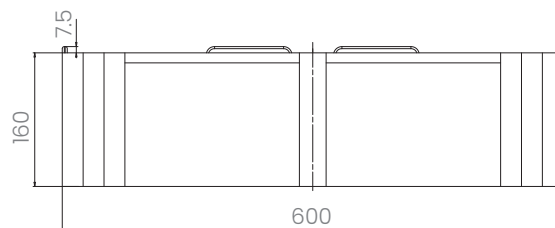
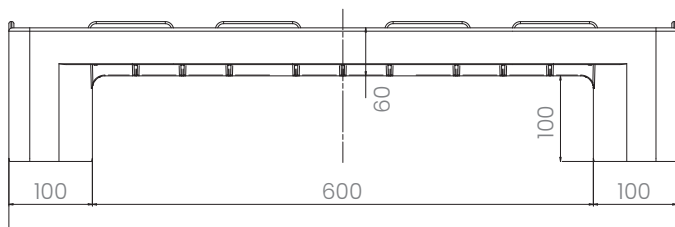
### Articulated lorry

Trailer:	1224
Jumbo:	1368





Item no.	Col-our	Dimensions (mm) L x W x H	Weight (kg)	Load capacity	Blades	Features	Material
350-00000005	●	800 x 600 x 160	9	Static Dynamic On high shelves	2 welded 2 unwelded 3 welded 3 unwelded 5 unwelded	Profile. Outer, anti-slip edge (mm) Centre lock	HDPE New goods Recycled PE conductive
				2000 500	●	7	● ●



### Static load:

Compressive strength on a flat floor surface with an evenly distributed load at a room temperature of approximately 20°C.



### Dynamic load:

on the fork with a selected, evenly distributed load at a room temperature of approx. 20°C.



### On high shelves

with the load (bagged goods) evenly distributed across the long sides and supported at two points for over 100 hours at a room temperature of approx. 20°C.

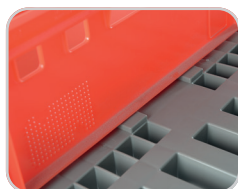
## LOGO

Hot stamping of text, logos and numbering is available on request, subject to minimum order quantities.

Labelling



Optimal transport safety thanks to anti-slip edges on all four sides



Additional centre lock  
Ideal for use with E-boxes



The ideal complement to the EURO HI hygiene pallet and the E-Box system

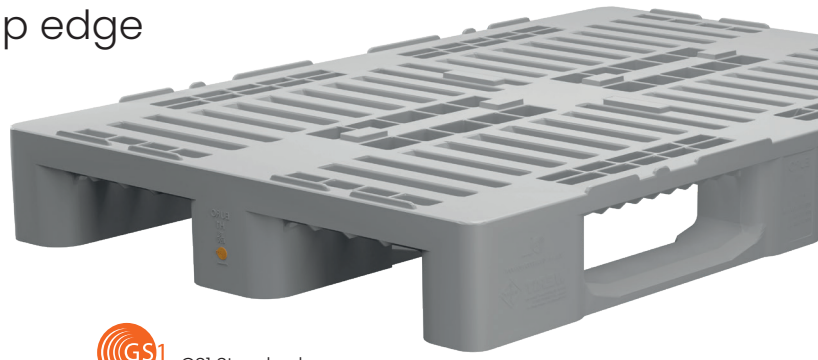
All technical data refers to typical characteristics determined under specific test conditions. Different operating conditions, such as the type of load, ambient temperature and duration of exposure, result in varying values, which can be verified on request.

# ▼ EURO H1 hygiene pallet

with central locking and non-slip edge  
1200 x 800 mm

## Use | Requirement

The EURO H1 pallet has been the leading hygiene pallet for years. It is used in all sectors of industry and commerce where high hygiene standards are required.



GS1 Standard

GS1 Germany



DIN-plus certified



Certified safe

## In detail

- ▼ Awarded the GS mark for certified safety
- ▼ DIN-plus certified
- ▼ In accordance with the GS1 requirements profile
- ▼ The basis for all standard box systems
- ▼ Compatible with H2 half-pallets and E-box systems
- ▼ Excellent cleaning properties
- ▼ Dimensionally stable from -40 °C to +70 °C

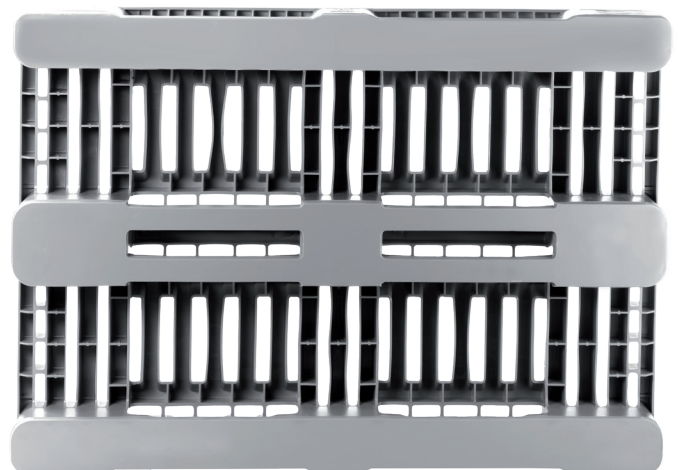
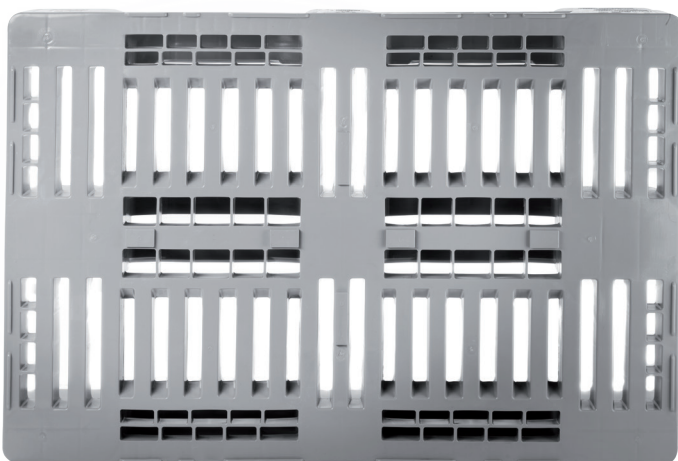
## Loading quantities (units / approximate figures)

### Container

Container 20':	192
Container 40':	390
Container 40' High Cube:	440
Standard 45-foot high-cube container trailer:	510

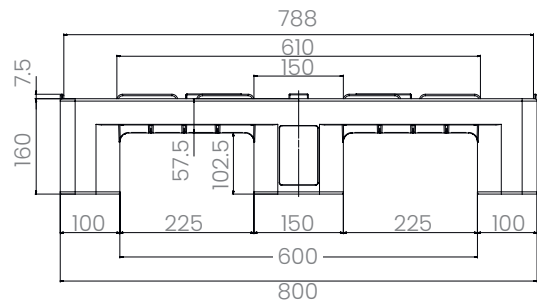
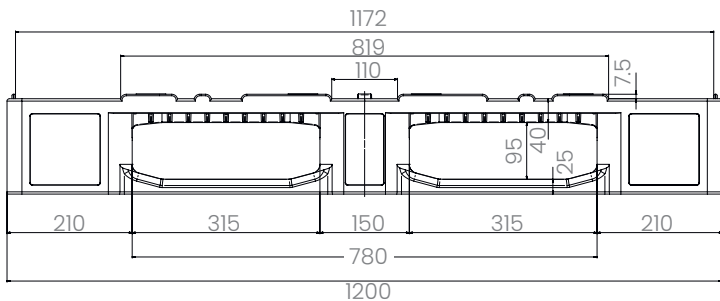
### Articulated lorry

Trailer:	612
Jumbo:	684





Item no.	Col-our	Dimensions (mm) L x W x H	Weight (kg)	Load capacity	Blades	Features	Material
350-00000004	●	1200 x 800 x 160	18	Static Dynamic On high shelves	2 welded 3 welded 3 unwelded 5 unwelded	Profile. Outer, anti-slip edge (mm) Centre lock	HDPE New goods Recycled PE conductive
				5000 1250 1000	●	7 ●	● ●



### Static load:

Compressive strength on a flat floor surface with an evenly distributed load at a room temperature of approximately 20°C.



### Dynamic load:

on the fork with a selected, evenly distributed load at a room temperature of approx. 20°C.



### On high shelves:

with the load (bagged goods) evenly distributed across the long sides and supported at two points for over 100 hours at a room temperature of approx. 20°C.

## LOGO

Labelling

Hot stamping of text, logos and numbering is available on request, subject to minimum order quantities.

Position: Entrance openings / 800-series pages

Size: max. 220 x 30 mm

Quantity: 15 pieces for 15 mm letters / 10 pieces for 30 mm letters



Optimal transport safety thanks to anti-slip edges on all four sides



Additional centre lock  
Ideal for use with E-boxes



In accordance with the GSI requirements.  
Exchangeable nationwide



DIN-plus certified. Awarded the GS "Tested Safety" mark

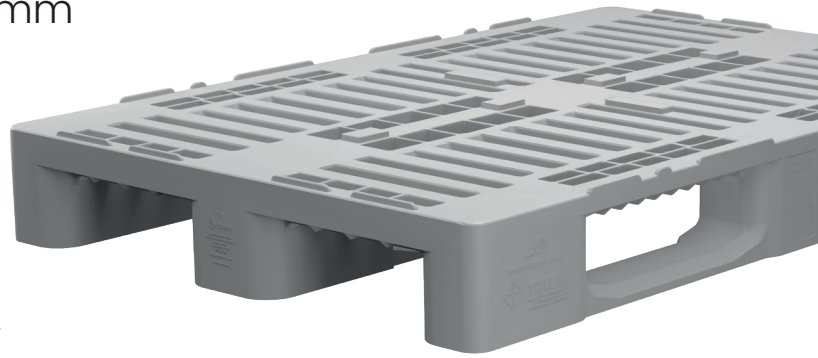


Closed skid system with welded skids

All technical data refers to typical characteristics determined under specific test conditions. Different operating conditions, such as the type of load, ambient temperature and duration of exposure, result in varying values, which can be verified on request.

# ▼ H1 Hygiene Pallet

with anti-slip edge | 1200 x 800 mm



## Use | Requirement

The H1 hygiene range is suitable for universal use, particularly in situations where cleanliness and hygiene are essential. It is robust and durable, making it a cost-effective reusable system for effective use.

## In detail

- ▼ Safe handling of all standard box systems
- ▼ Compatible with the H2 half-pallet
- ▼ Ideal for transporting and storing bagged goods or cardboard boxes
- ▼ Excellent cleaning properties
- ▼ Dimensionally stable from -40 °C to +70 °C

## Options

- ▼ Without anti-slip edge

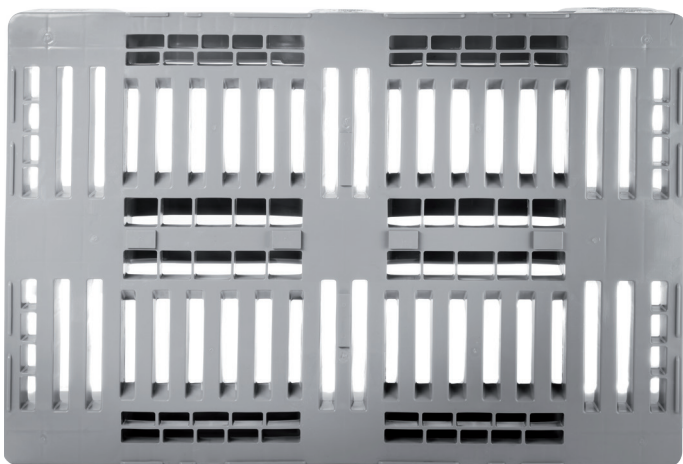
## Loading quantities (units / approximate figures)

### Container

Container 20':	192
Container 40':	390
Container 40' High Cube:	440
Standard 45-foot high-cube container trailer:	510

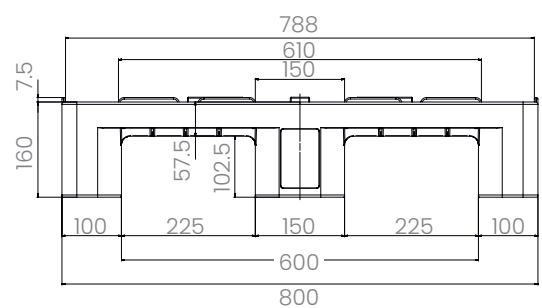
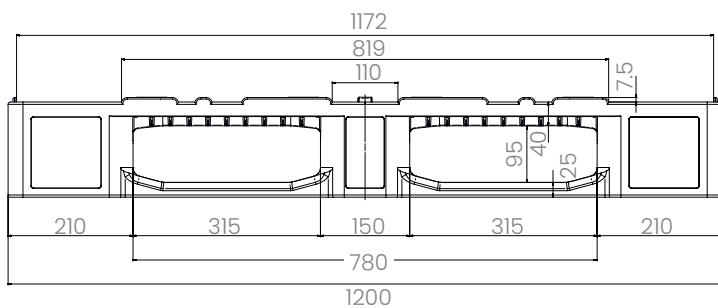
### Articulated lorry

Trailer:	612
Jumbo:	684





Item no.	Col-our	Dimensions (mm) L x W x H	Weight (kg)	Load capacity			Blades		Features		Material		
350-00000002	●	1200 x 800 x 160	18	Static 5000	Dynamic 1250	On high shelves 1000	2 welded ●	3 welded	3 unwelded	5 unwelded	Profile. Outer, anti-slip edge (mm) Centre lock	7 ● ●	HDPE New goods Recycled PE conductive



### Static load:

Compressive strength on a flat floor surface with an evenly distributed load at a room temperature of approximately 20°C.



### Dynamic load:

on the fork with a selected, evenly distributed load at a room temperature of approx. 20°C.



### On high shelves:

with the load (bagged goods) evenly distributed across the long sides and supported at two points for over 100 hours at a room temperature of approx. 20°C.

## LOGO

Labelling

Hot stamping of text, logos and numbering is available on request, subject to minimum order quantities.

Position: Entrance openings / 800-series pages

Size: max. 220 x 30 mm

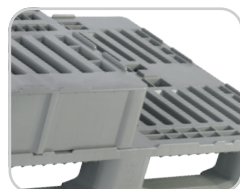
Quantity: 15 pieces for 15 mm letters / 10 pieces for 30 mm letters



Optimal transport safety thanks to anti-slip edges on all four sides



Safe handling of box systems



Compatible with the H2 half-pallet



Closed skid system with welded skids

All technical data refers to typical characteristics determined under specific test conditions. Different operating conditions, such as the type of load, ambient temperature and duration of exposure, result in varying values, which can be verified on request.

# ▼ H1-R

1200 x 800mm

## Use | Requirement

The H1-R product range is manufactured from single-grade recycled HDPE. The pallets are sturdy, dimensionally stable and safe, and designed for high load capacities. Ideally suited for use in the non-food sector.

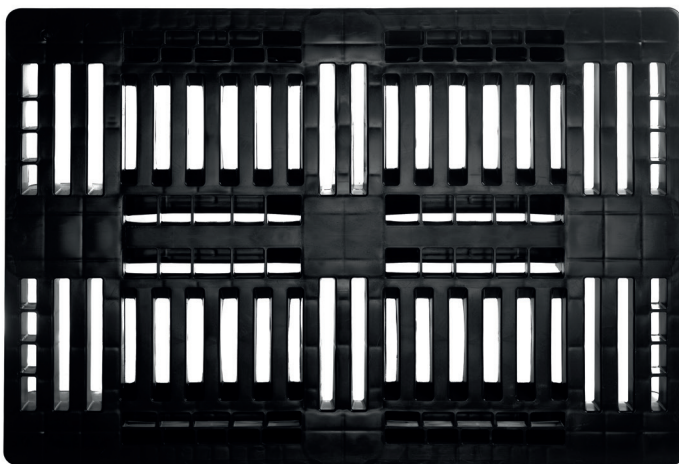
By using the H1-R recycling pallet, you can save time and money, thereby achieving maximum cost-effectiveness and efficiency in your logistics operations.

## In detail

- ▼ Made from single-grade recycled HDPE
- ▼ Dimensionally stable from -30 °C to +60 °C

## Options

- ▼ With a central locking mechanism and/or an 11 mm anti-slip edge (special version), particularly suitable for transporting KLT containers
- ▼ with welded skirts



## Loading quantities (units / approximate figures)

### Container

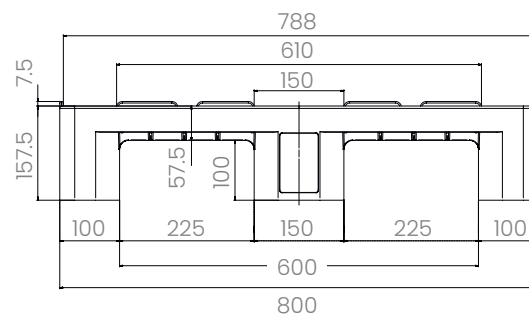
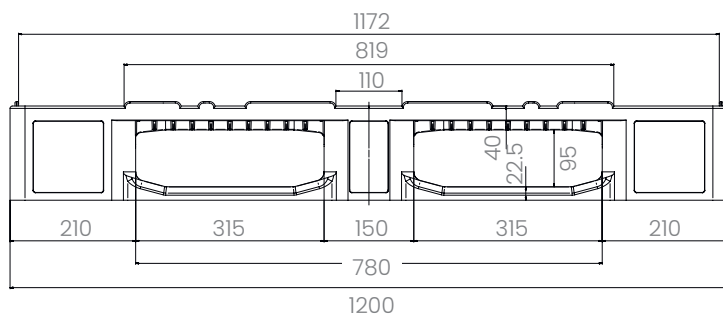
Container 20':	192
Container 40':	390
Container 40' High Cube:	440
Standard 45-foot high-cube container trailer:	510

### Articulated lorry

Trailer:	612
Jumbo:	684



Item no.	Col-our	Dimensions (mm) L x W x H	Weight (kg)	Load capacity			Blades		Features			Material					
352-00000009	●	1200 x 800 x 160	16	4000	1000		2 welded	3 welded	3 unwelded	5 unwelded	Profile.	Outer, anti-slip edge (mm)	Centre lock	HDPE	New goods	Recycled PE	conductive
352-000000010	●	1200 x 800 x 160	16	4000	1000						7						



### Static load:

Compressive strength on a flat floor surface with an evenly distributed load at a room temperature of approximately 20°C.



### Dynamic load:

on the fork with a selected, evenly distributed load at a room temperature of approx. 20°C.



### On high shelves:

with the load (bagged goods) evenly distributed across the long sides and supported at two points for over 100 hours at a room temperature of approx. 20°C.

## LOGO

Labelling

Hot stamping of text, logos and numbering is available on request, subject to minimum order quantities.

Position: Entrance openings / 800-series pages

Size: max. 220 x 30 mm

Quantity: 15 pieces for 15 mm letters / 10 pieces for 30 mm letters



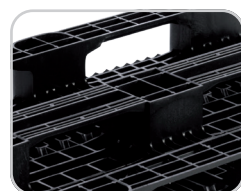
Optimal transport safety thanks to anti-slip edges on all four sides



Safe handling thanks to the 11 mm anti-slip edge



Suitable for KLT containers



Open skid system



Ramp approaches on both sides

All technical data refers to typical characteristics determined under specific test conditions. Different operating conditions, such as the type of load, ambient temperature and duration of exposure, result in varying values, which can be verified on request.

# ▼ HI-L The Conductive

1200 x 800mm

## Use | Requirement

The HI-L from WERIT has been specially developed for the automotive industry and its suppliers. As a conductive, antistatic plastic pallet, it protects electrostatic-sensitive components from becoming static charged. It is therefore the perfect complement to conductive plastic containers.



electrostatically dissipative

## In detail

- ▼ Conductive plastic pallet for use in the automotive, chemical and electrical industries: Surface resistance  $<10^9 \Omega$ , in accordance with DIN IEC 61340-5-1
- ▼ Dimensionally stable from  $-30\text{ }^\circ\text{C}$  to  $+60\text{ }^\circ\text{C}$
- ▼ Particularly rugged and economical for heavy-duty use

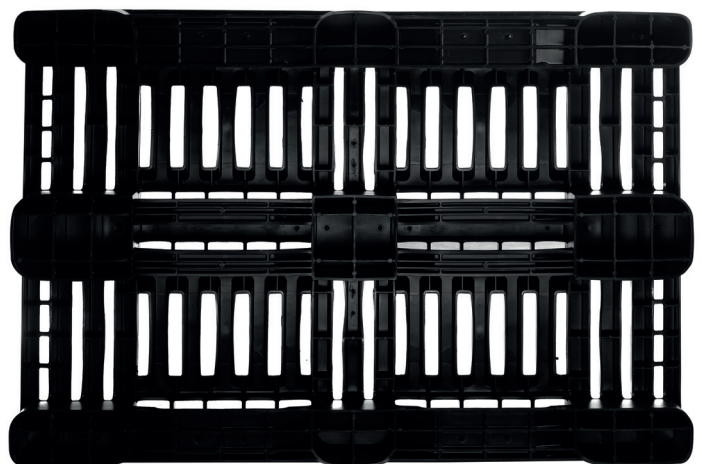
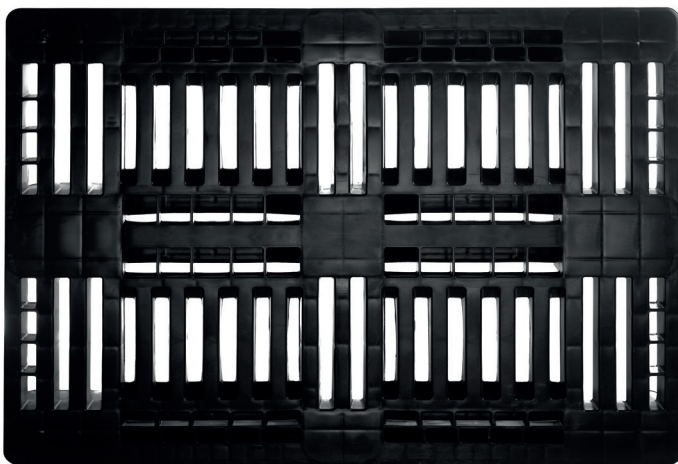
## Loading quantities (units / approximate figures)

### Container

Container 20':	192
Container 40':	390
Container 40' High Cube:	440
Standard 45-foot high-cube container trailer:	510

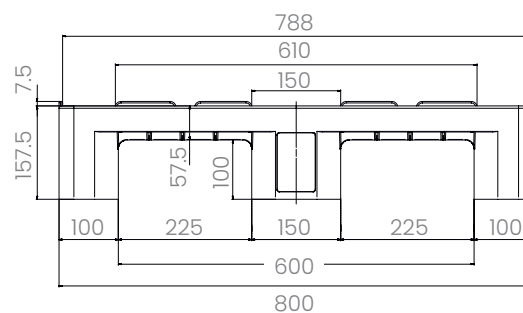
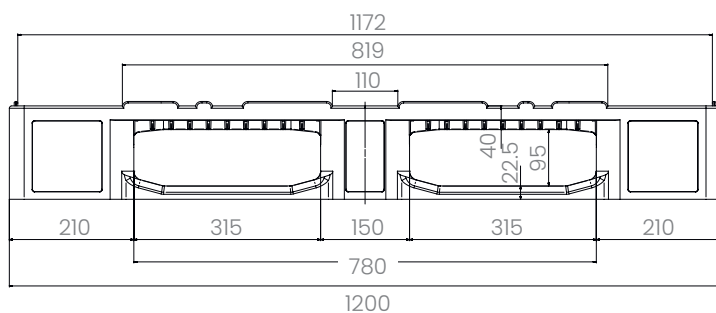
### Articulated lorry

Trailer:	612
Jumbo:	684





Item no.	Col-our	Dimensions (mm) L x W x H	Weight (kg)	Load capacity	Blades	Features	Material
352-00000017	●	1200 x 800 x 160	12	Static Dynamic On high shelves	2 welded 3 welded 3 unwelded 5 unwelded	Profile. Outer, anti-slip edge (mm) Centre lock	HDPE New goods Recycled PE conductive
				5000 1000	●	7	● ● ●



### Static load:

Compressive strength on a flat floor surface with an evenly distributed load at a room temperature of approximately 20°C.



### Dynamic load:

on the fork with a selected, evenly distributed load at a room temperature of approx. 20°C.



### On high shelves:

with the load (bagged goods) evenly distributed across the long sides and supported at two points for over 100 hours at a room temperature of approx. 20°C.

## LOGO

Labelling

Hot stamping of text, logos and numbering is available on request, subject to minimum order quantities.

Position: Entrance openings / 800-series pages

Size: max. 220 x 30 mm

Quantity: 15 pieces for 15 mm letters / 10 pieces for 30 mm letters



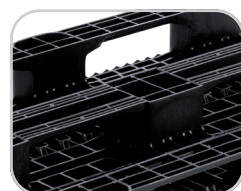
Optimal transport safety thanks to anti-slip edges on all four sides



Safe handling thanks to the 11 mm anti-slip edge



Suitable for KLT containers



Open skid system



Ramp approaches on both sides

All technical data refers to typical characteristics determined under specific test conditions. Different operating conditions, such as the type of load, ambient temperature and duration of exposure, result in varying values, which can be verified on request.

# ▼ IKP 1208

1200 x 800mm

## Use | Requirement

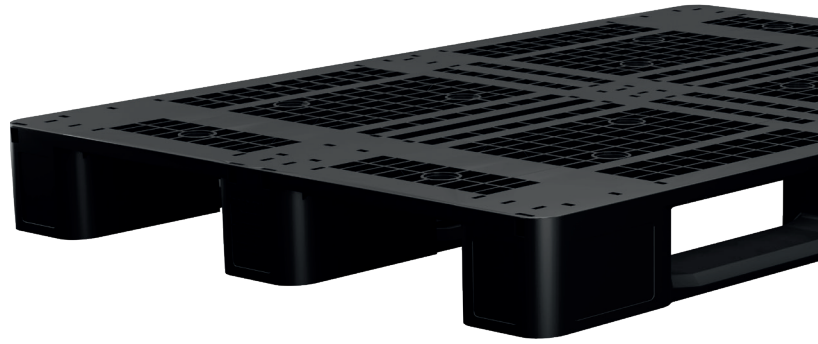
The IKP product range is manufactured from single-grade recycled HDPE. It is a sturdy, dimensionally stable plastic pallet in Euro pallet dimensions. It is particularly notable for its wide range of possible variations and, consequently, its diverse applications. Depending on the load capacity and safety requirements for transport, up to 6 steel profiles and 12 anti-slip plugs can be fitted.

## In detail

- ▼ Made from single-grade recycled HDPE
- ▼ Dimensionally stable from -30 °C to +60 °C
- ▼ Particularly rugged and economical for heavy-duty use

## Options

- ▼ With an outer edge of 22 mm, giving an internal dimension of 1200 x 800 mm
- ▼ Steel profiles designed to support loads of up to 1,250 kg in high-bay racking
- ▼ Edge options: none, 7 mm anti-slip edge, 22 mm outer edge
- ▼ Anti-slip pads from top to bottom



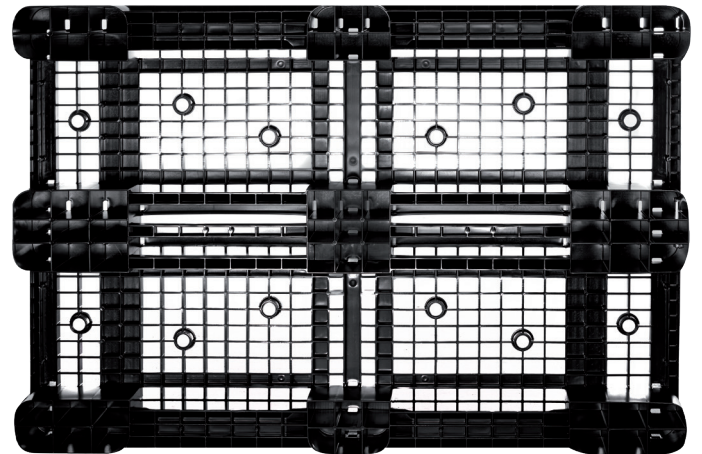
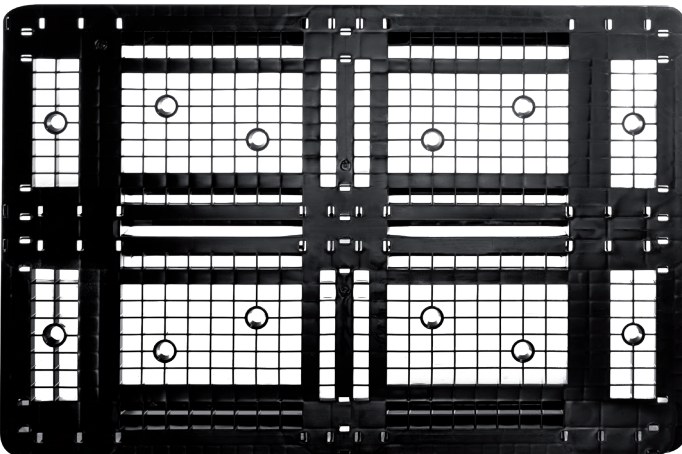
## Loading quantities (units / approximate figures)

### Container

Container 20':	215
Container 40':	440
Container 40' High Cube:	440
Standard 45-foot high-cube container trailer:	544

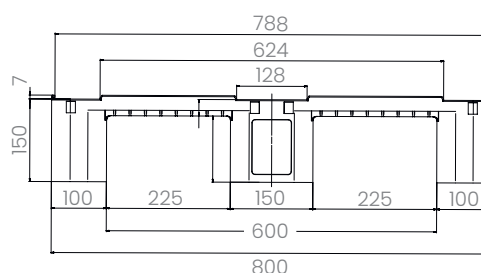
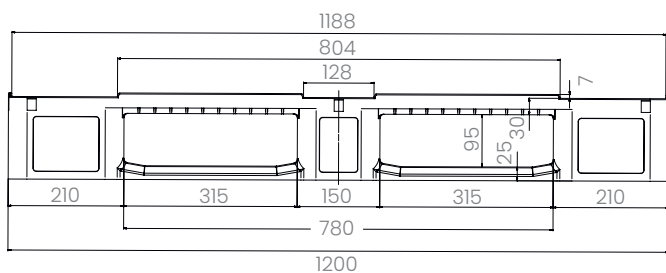
### Articulated lorry

Trailer:	680
Jumbo:	760





Item no.	Colour	Dimensions (mm) L x W x H	Weight (kg)	Load capacity			Blades				Features		Material				
				Static	Dynamic	On high shelves	2 welded	3 welded	3 unwelded	5 unwelded	Profile.	Outer, anti-slip edge (mm)	Centre lock	HDPE	New goods	Recycled PE	conductive
352-00000001	●	1200 x 800 x 150	12	5000	1000	400			●			●		●			
352-00000004	●	1200 x 800 x 150	12	5000	1000	400			●		7	●		●			
352-00000002	●	1200 x 800 x 150	14.5	5000	1250	1000			●		3	●		●			
352-00000005	●	1200 x 800 x 150	14.5	5000	1250	1000			●		3 7	●		●			
352-00000003	●	1200 x 800 x 150	15.5	5000	1500	1250			●		4	●		●			
352-00000006	●	1200 x 800 x 150	15.5	5000	1500	1250			●		4 7	●		●			



### Static load:

Compressive strength on a flat floor surface with an evenly distributed load at a room temperature of approximately 20°C.



### Dynamic load:

on the fork with a selected, evenly distributed load at a room temperature of approx. 20°C.



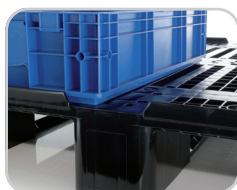
### On high shelves:

with the load (bagged goods) evenly distributed across the long sides and supported at two points for over 100 hours at a room temperature of approx. 20°C.

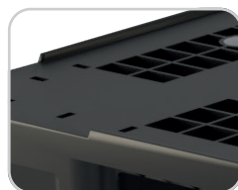
## LOGO

Labelling

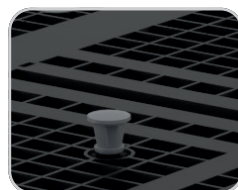
Hot stamping of text, logos and numbering is available on request, subject to minimum order quantities.



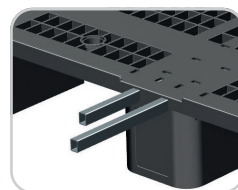
Optional 22 mm anti-slip edge in the special version



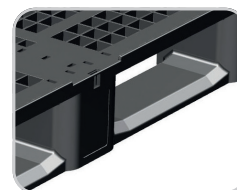
7 mm anti-slip edge



Up to 12 anti-slip plugs can be fitted



Up to 6 steel profiles are possible



Ramp approaches on both sides

All technical data refers to typical characteristics determined under specific test conditions. Different operating conditions, such as the type of load, ambient temperature and duration of exposure, result in varying values, which can be verified on request.

# ▼ IKP 1213

1200 x 1000mm

## Use | Requirement

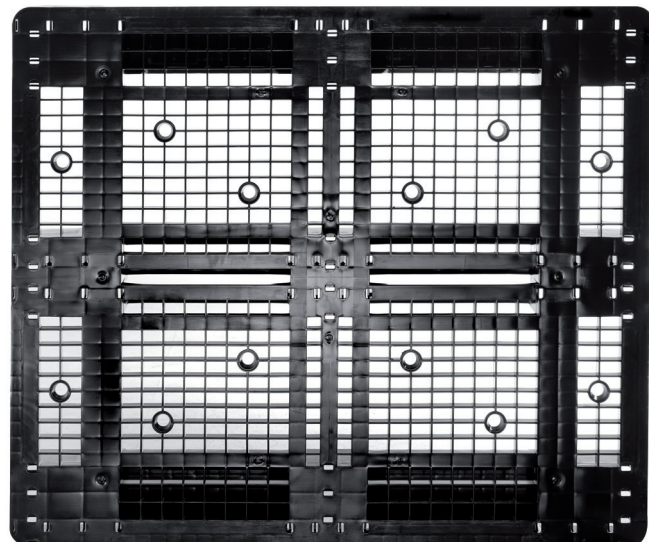
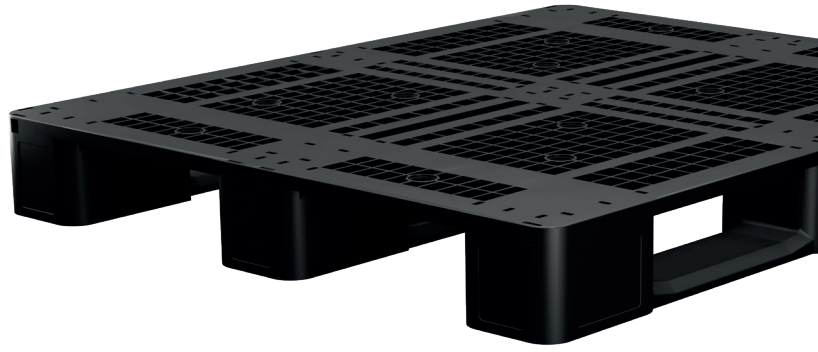
The IKP product range is manufactured from single-grade recycled HDPE. It is a sturdy, dimensionally stable plastic pallet in standard industrial dimensions. It is particularly notable for its wide range of possible variations and, consequently, its diverse applications. Depending on the load capacity and safety requirements for transport, up to 6 steel profiles and 12 anti-slip plugs can be fitted.

## In detail

- ▼ Made from single-grade recycled HDPE
- ▼ Dimensionally stable from -30 °C to +60 °C

## Options

- ▼ Steel profiles designed to support loads of up to 1,250 kg in high-bay racking
- ▼ Exterior edge options: none, 7 mm anti-slip edge, 22 mm anti-slip edge
- ▼ Anti-slip pads from top to bottom



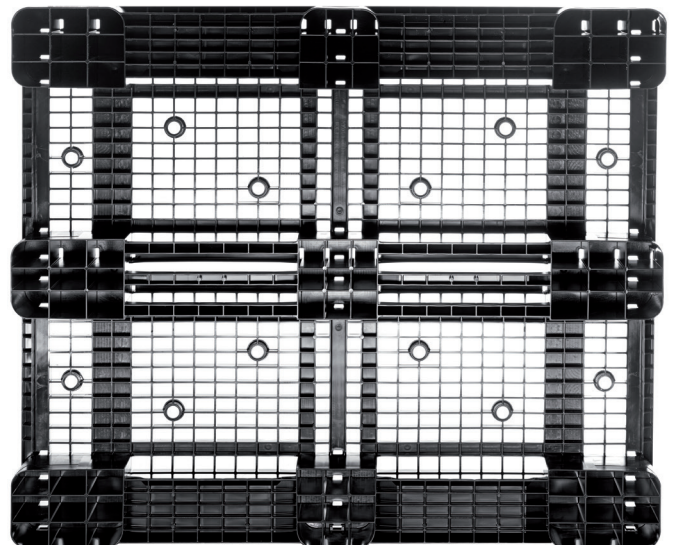
## Loading quantities (units / approximate figures)

### Container

Container 20':	140
Container 40':	330
Container 40' High Cube:	374
Standard 45-foot high-cube container trailer:	416

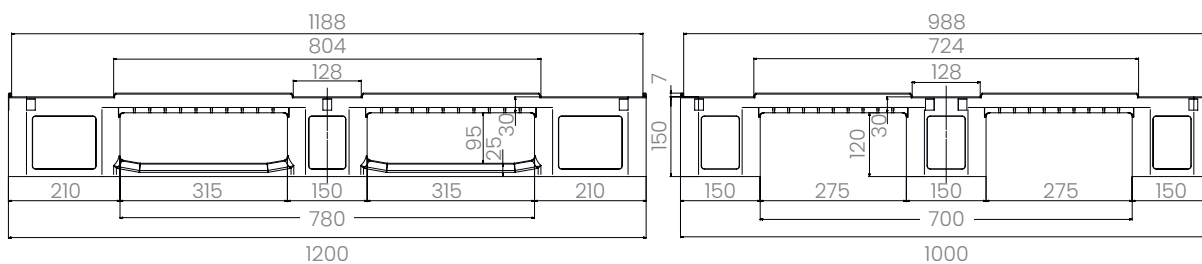
### Articulated lorry

Trailer:	494
Jumbo:	570





Item no.	Colour	Dimensions (mm) L x W x H	Weight (kg)	Load capacity			Blades				Features			Material	
				Static	Dynamic	On high shelves	2 welded	3 welded	3 unwelded	5 unwelded	Profile.	Outer, anti-slip edge (mm)	Centre lock	HDPE	New goods
351-000000001	●	1200 x 1000 x 150	14	5000	1000	400			●			●	●		
351-000000004	●	1200 x 1000 x 150	14	5000	1000	400			●		7	●	●		
351-000000002	●	1200 x 1000 x 150	16.5	5000	1250	1000			●		3	●	●		
351-000000005	●	1200 x 1000 x 150	16.5	5000	1250	1000			●		3 7	●	●		
351-000000003	●	1200 x 1000 x 150	17.5	5000	1500	1250			●		4	●	●		
351-000000006	●	1200 x 1000 x 150	17.5	5000	1500	1250			●		4 7	●	●		



### Static load:

Compressive strength on a flat floor surface with an evenly distributed load at a room temperature of approximately 20°C.



### Dynamic load:

on the fork with a selected, evenly distributed load at a room temperature of approx. 20°C.



### On high shelves:

with the load (bagged goods) evenly distributed across the long sides and supported at two points for over 100 hours at a room temperature of approx. 20°C.

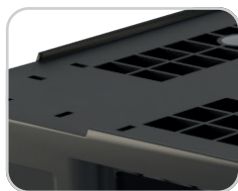
## LOGO

Hot stamping of text, logos and numbering is available on request, subject to minimum order quantities.

Labelling



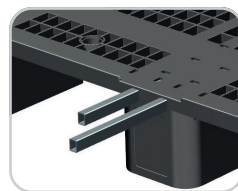
Optional 22 mm anti-slip edge in the special version



7 mm anti-slip edge



Up to 12 anti-slip plugs can be fitted

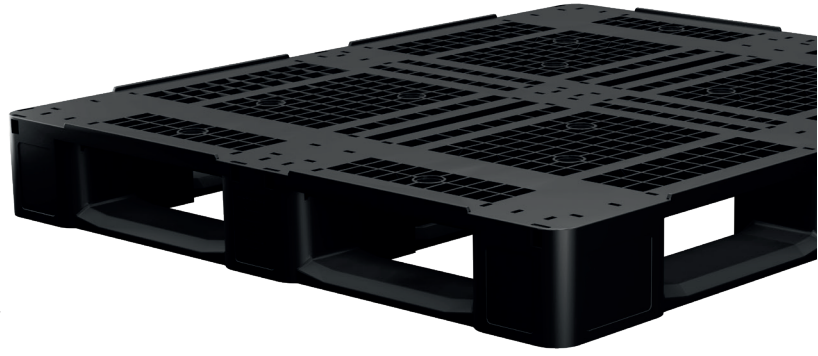


Up to 6 steel profiles are possible

All technical data refers to typical characteristics determined under specific test conditions. Different operating conditions, such as the type of load, ambient temperature and duration of exposure, result in varying values, which can be verified on request.

# ▼ IKP 1215

1200 x 1000mm



## Use I Requirement

The IKP product range is manufactured from single-grade recycled HDPE. It is a sturdy, dimensionally stable plastic pallet in standard industrial dimensions. It is particularly notable for its wide range of possible variations and, consequently, its diverse applications. Depending on the load capacity and safety requirements for transport, up to 6 steel profiles and 12 anti-slip plugs can be fitted.

## In detail

- ▼ Made from single-grade recycled HDPE
- ▼ Dimensionally stable from -30 °C to +60 °C

## Options

- ▼ Steel profiles for load-bearing capacity
- ▼ up to 1,250 kg on high-bay racking
- ▼ Exterior edge options: none, 7 mm anti-slip edge, 22 mm anti-slip edge
- ▼ Anti-slip pads from top to bottom

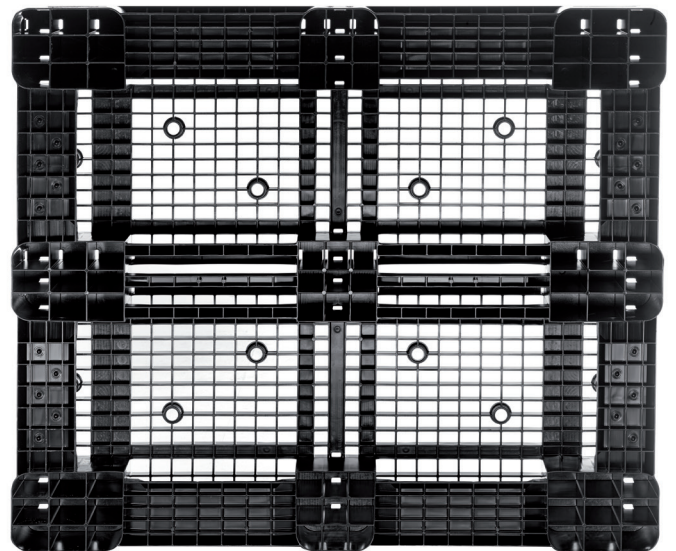
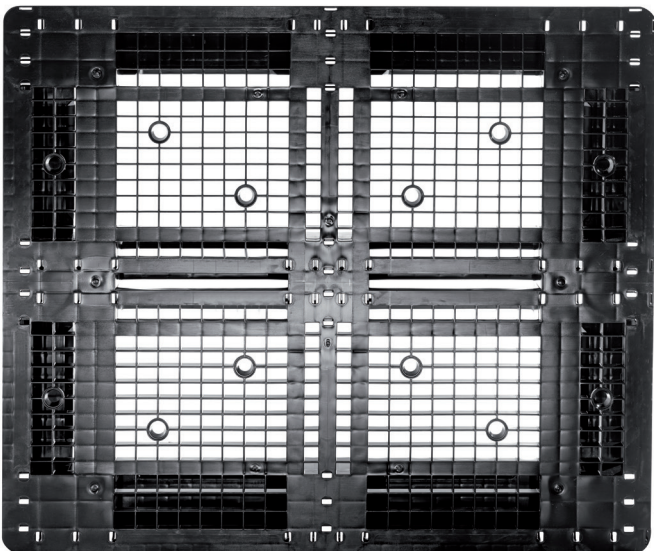
## Loading quantities (units / approximate figures)

### Container

Container 20':	140
Container 40':	330
Container 40' High Cube:	374
Standard 45-foot high-cube container trailer:	410

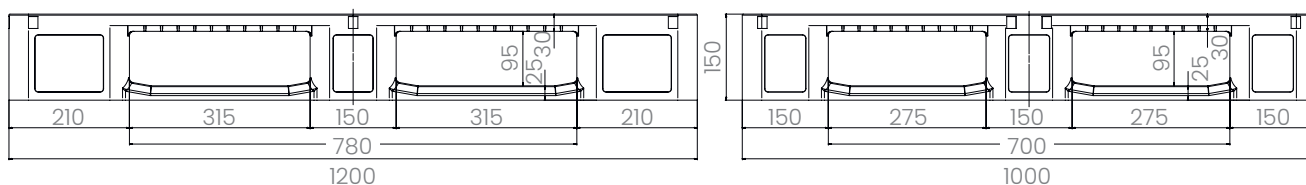
### Articulated lorry

Trailer:	494
Jumbo:	570





Item no.	Colour	Dimensions (mm) L x W x H	Weight (kg)	Load capacity			Blades		Features		Material						
				Static	Dynamic	On high shelves	2 welded	3 welded	3 unwelded	5 unwelded	Profile.	Outer, anti-slip edge (mm)	Centre lock	HDPE	New goods	Recycled PE	conductive
351-000000007	●	1200 x 1000 x 150	15	5000	1000	400			●		7			●		●	
351-000000008	●	1200 x 1000 x 150	17.5	5000	1250	1000			●	3	7			●		●	
351-000000009	●	1200 x 1000 x 150	18.5	5000	1500	1250			●	4	7			●		●	



### Static load:

Compressive strength on a flat floor surface with an evenly distributed load at a room temperature of approximately 20°C.



### Dynamic load:

on the fork with a selected, evenly distributed load at a room temperature of approx. 20°C.



### On high shelves:

with the load (bagged goods) evenly distributed across the long sides and supported at two points for over 100 hours at a room temperature of approx. 20°C.

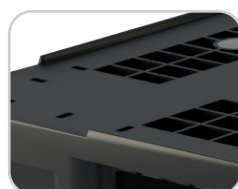
## LOGO

Hot stamping of text, logos and numbering is available on request, subject to minimum order quantities.

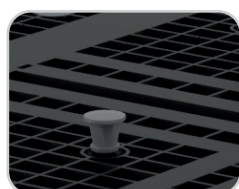
Labelling



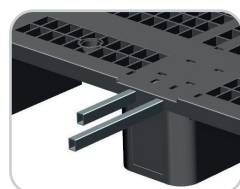
Optional 22 mm anti-slip edge in the special version



7 mm anti-slip edge



Up to 12 anti-slip plugs can be fitted



Up to 6 steel profiles are possible



Ramp approaches on both sides

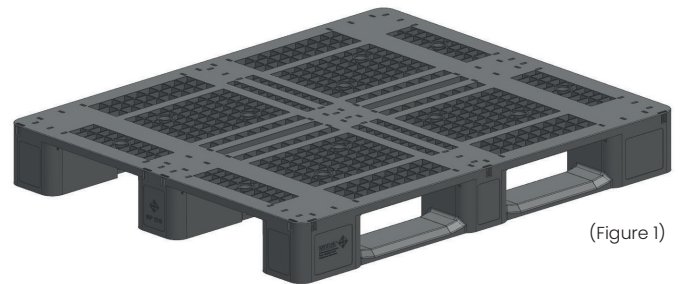
All technical data refers to typical characteristics determined under specific test conditions.

Different operating conditions, such as the type of load, ambient temperature and duration of exposure, result in varying values, which can be verified on request.

# ▼ Static, dynamic or on high-bay racking

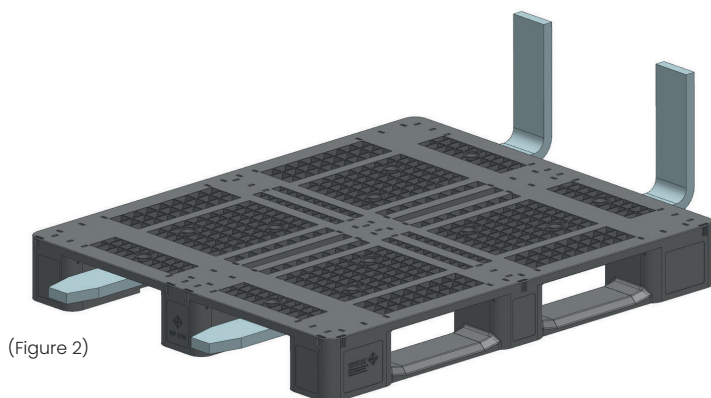
## Static load | Pallet with a flat base (Fig. 1)

- ▼ Evenly distributed surface load at a room temperature of 20°C

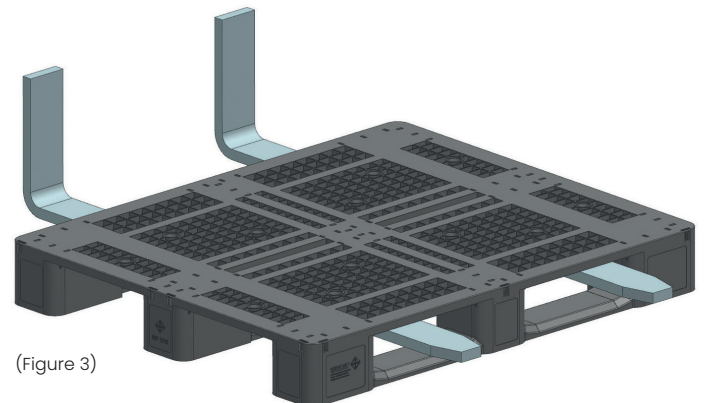


## Dynamic load | Pallet on the forklift tines

- ▼ Inserted from the short side (Fig. 2) with an evenly distributed surface load at a room temperature of 20°C

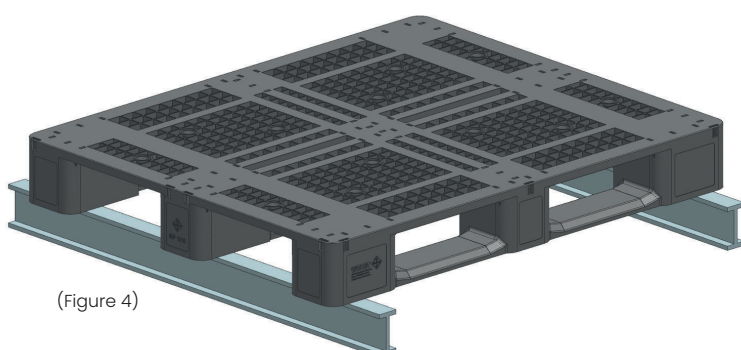


- ▼ Inserted from the long side (Fig. 3) with an evenly distributed surface load at a room temperature of 20°C

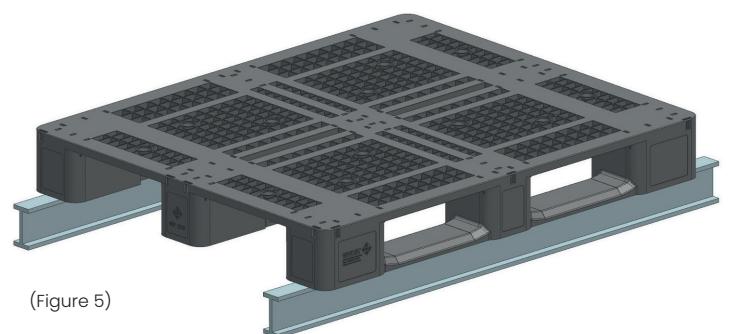


## On high shelves

- ▼ The pallet stands upright on its three front runners for 100 hours (Figure 4) with an evenly distributed surface load at a room temperature of 20°C



- ▼ The pallet is positioned horizontally across the long sides of the skids for 100 hours (Fig. 5), with the load distributed evenly across the surface at a room temperature of 20°C



# ▼ Industries

WERIT's solutions – as tailored to your needs as you are



## Food and beverage industry

Hygiene and functionality are particularly important in the food sector, and especially in the meat industry. The EURO HI hygiene pallet really stands out here thanks to its new GSI labelling (formerly EHI labelling).



## Beverage industry

WERIT meets the high standards of the drinks industry. The versatility of H1 and H2 pallets opens up a wide range of possibilities across all sectors.



## Chemicals, Pharmaceuticals, Cosmetics

These industries must ensure high standards of hygiene, cleanliness and safety – WERIT provides plastic pallets that are ideally suited to safe transport and storage.



## Automotive industry and suppliers

Particularly in the automotive industry and its supply chain, maximum flexibility is essential. This also includes modern transport and storage solutions, as well as custom pallets made from ESD-compliant materials and bespoke products, to ensure the necessary protection for the goods.



## Logistics

To ensure that all goods and products reach their destination safely, WERIT offers well-designed plastic pallets that help to ensure a smooth logistics process.



## Retail, retail chains

All plastic pallets manufactured by WERIT are ideally suited for use in industry and commerce. In addition to various sizes, the range also includes bespoke items and products made from a variety of materials.



## Miscellaneous Information



# ▼ Chemical resistance

Chemical	Concentration	HDPE	PP
Acetaldehyde		3/3	3/4
Acetamide	saturated	1/1	1/1
Acetone		1/1	1/3
Acetonitrile		1/1	3/4
Acetophenone		0/0	1/3
Acetylene	100%	1/0	1/0
Acrylonitrile		1/1	3/4
Adipic acid	saturated	1/1	1/1
Allyl alcohol	96%	1/3	2/2
Aluminium chloride	10%	1/1	1/1
Aluminium oxide	hard	1/1	1/1
Formic acid	98- 100 %	1/1	1/3
Amino acids		1/1	1/1
Ammonia	25%	1/1	1/1
Ammonium chloride	watery	1/1	1/1
Ammonium hydroxide	5%	1/1	1/1
Ammonium oxalate		1/1	1/2
Ammonium phosphate	Any	1/1	1/1
Sulfide of ammonium	Any	1/1	1/1
Amyl acetate (Pentyl acetate)		1/2	3/4
Amyl alcohol		1/1	1/1
Aniline		1/2	2/3
Barium chloride	saturated	1/1	1/1
Benzaldehyde		1/3	1/4
Petrol		2/3	3/4
Benzoic acid	saturated	1/1	1/3
Benzene		3/4	3/4
Benzilic alcohol		3/4	4/4
Hydrocyanic acid	watery	1/1	1/1
Lead acetate	watery	1/1	1/1
Boric acid	10%	1/1	1/1
brake fluid		1/0	1/1
Bromine		4/4	4/4
Bromobenzene		3/4	4/4
Hydrobromic acid	50%	1/1	1/2
Butadiene		3/4	4/4
Butanol	technically pure	1/1	1/2
Butyric acid		3/4	4/4
Butyl acetate		1/2	3/4

Chemical	Concentration	HDPE	PP
Calcium chloride	watery	1/1	1/1
Calcium hydroxide	conc.	1/1	1/1
Calcium hypochlorite	saturated	1/1	1/1
Calcium sulphate	saturated	1/1	1/1
Carbazole		1/1	1/1
Cellosolve acetate		1/1	1/2
Chlorine	10 % wet	3/4	4/4
Chlorobenzene		3/4	3/4
Chloroform		3/4	2/3
Chlorinated water		3/0	3/4
Chromic acid	10%	1/1	1/1
Citric acid	10%	1/1	1/1
Cyclohexane		3/4	3/4
Decahydronaphthalene (decalin)		1/2	2/4
Dibutyl phthalate		1/3	2/2
Dichlorobenzene		3/3	3/4
Diethylbenzene		3/4	4/4
Diethyl ether		3/4	4/4
Dimethylformamide		1/1	1/1
Dioxin 1.4		2/2	3/3
Glacial acetic acid		0/0	1/3
Acetic acid	50%	1/1	1/1
Methyl acetate	100%	1/0	1/3
Ethanol	50%	1/1	1/1
Ether		3/4	4/4
Ethyl acetate		1/3	1/3
Ethyl acrylate	100%	4/4	4/4
Ethyl alcohol	96%	1/1	1/1
Ethylbenzene		2/3	3/4
Ethyl chloride		3/3	3/4
Ethylene cyanoacetate		1/1	1/1
Ethylene glycol		1/1	1/1
Ethylene oxide		2/3	3/3
Ethyl ether	technically pure	3/0	4/4
Fluor		4/4	4/4
Fluoride		1/1	1/1
Hydrofluoric acid	50%	1/1	1/1
Formaldehyde	40%	1/2	1/2
Photo developer		1/3	1/2
Photo fixing baths		1/0	1/1
Antifreeze (car)		1/1	1/1



**Note:** Chemical resistance applies **ONLY** to reusable transport packaging and pallets!

Chemical	Concentration	HDPE	PP
Glucose	Any	1/1	1/1
Glycerin	Any	1/1	1/1
Urea (carbamide, etc.)		1/1	1/1
Fuel oil		3/3	1/3
Heptane, n-		2/3	2/4
Hexane		2/3	2/3
Hydrazine hydrate	watery	1/1	1/1
Isopropanol (isopropyl alcohol)	technically pure	1/1	1/1
Isopropyl acetate		1/2	2/3
Iodine (I) Tincture		1/3	1/2
Potash lye (potassium hydroxide)	50%	1/1	1/1
Potassium perchlorate	saturated	1/1	1/1
Potassium permanganate		1/3	1/1
Kerosene		2/2	3/3
Aqua regia		4/4	4/4
Carbon dioxide		1/1	1/1
Kresol		3/4	2/3
Lanolin	technically pure	1/3	1/3
Machine oil	100%	0/0	1/3
Menthol	100%	1/3	1/3
Metallic salts	Solved	1/1	1/1
Methanol (methyl alcohol)		1/1	1/1
Methoxyethyl oleate		1/1	1/2
Methyl ethyl ketone		1/3	1/3
Methylene chloride		4/4	3/4
Lactic acid	85%	1/1	1/2
Mineral oil		1/1	1/3
Monochloroacetic acid		1/1	1/2
Sodium acetate	Any	1/1	1/1
Sodium carbonate		1/1	1/1
Sodium chloride	Any	1/1	1/1
Sodium dichromate		0/0	1/1
Sodium hydroxide	50%	1/1	1/1
Sodium hypochlorite	15%	1/1	1/1
Sodium hypochlorite	50%	3/3	3/3
Caustic soda	30%	1/1	1/1

Chemical	Concentration	HDPE	PP
Nitrobenzene		3/4	2/4
Octane, -n		1/1	1/1
Vegetable oils and fats		1/3	1/3
Oxalic acid		1/1	1/1
Perchloroethylene		4/4	4/4
Perchloric acid		2/4	2/4
Petroleum	technically pure	1/3	1/3
Phenol	100%	2/3	1/2
Phenylhydrazine	technically pure	3/0	3/4
Phosphoric acid	85%	1/1	1/2
Propane	gaseous	3/4	2/4
Propylene glycol		1/1	1/1
Propylene oxide		1/1	1/2
Pyridine		1/3	3/3
Mercury	pure	1/1	1/1
Mercury chloride		1/1	1/1
Resorcinol	saturated	1/1	1/1
Salicylic aldehyde		1/1	1/2
Salicylic acid	saturated	1/1	1/1
Nitric acid	50%	2/4	3/4
Hydrochloric acid	20%	1/1	1/1
Lubricating oils		1/3	3/0
Sulphur dioxide	damp	1/1	1/3
Carbon disulfide		4/4	4/4
Sulphuric acid	95%	3/4	3/4
Silver acetate		1/1	1/1
Silver nitrate		1/1	1/2
Stearic acid	crystals	1/3	1/3
Sulfid		2/3	(2)
Turpentine oil		2/2	4/4
Carbon tetrachloride		3/4	4/4
Tetrahydrofuran		3/4	3/4
Thionyl chloride	technically pure	4/4	4/4
Trichloroethylene	100%	3/4	4/4
Vinyl	technically pure	0/0	(3)
Plasticizers		1/3	1/3

Two values are given for each medium: the left-hand figure represents the value at +20°C, and the right-hand figure represents the value at +50°C.

1 = very good resistance / suitability, 2 = good resistance / suitability, 3 = limited resistance, 4 = poor resistance, 0 = no value available. This information is provided for guidance only and is subject to change. No legal claim can be derived from the information provided.

**HDPE** High-density polyethylene,  
**PP** Polypropylene

# ▼ 24 hours a day, every day

WERIT Online



Of course, you can also find our wealth of knowledge online at any time. Take advantage of this opportunity and visit our website. Get everything you need for information purposes – directly from the website or another online channel. It couldn't be more convenient or easier!

Embark on a journey of discovery to learn about the technical details of our products in the field of sustainable water technology. We provide you with an overview of our product range, solutions and services.



Download centre



Press releases



Our top priority here is communication on an equal footing. On our social media channels, you'll find concise, informative posts, features and videos on plastics technology, as well as fascinating insights into our day-to-day work.



Instagram:



LinkedIn





[www.dresselhaus.de](http://www.dresselhaus.de)

LM 790B

KRONE

# WERIT

value-driven + future-ready

D-57610 **Altenkirchen**, Kölner Straße, Phone +49 2681 807-01, [altenkirchen@werit.eu](mailto:altenkirchen@werit.eu)  
D-53567 **Buchholz**, Industriepark Nord 27, Phone +49 2683 976-0, [buchholz@werit.eu](mailto:buchholz@werit.eu)  
A-2514 **Traiskirchen**, Wienersdorfer Straße 20-24, Phone +43 2252 251331, [office@werit.at](mailto:office@werit.at)  
CH-8105 **Regensdorf/Zürich**, Wehntalerstrasse 113, Phone +41 44 843 50 50, [info@werit.ch](mailto:info@werit.ch)  
F-67162 **Wissembourg**, 7, Rue de l'Industrie, Phone +33 3 88 54 10 20, [info@werit.fr](mailto:info@werit.fr)  
F-26200 **Montélimar**, Site de production Allée du Lac, Phone +33 3 88 54 10 20, [info@werit.fr](mailto:info@werit.fr)  
E-08403 **Granollers/Barcelona**, Avda. San Julia 125/127, Phone +34 938 402256, [info@werit.es](mailto:info@werit.es)  
GB-**Manchester**, Darby Road, Irlam, M44 5BP, Phone +44 161 776-1414, [manchester@werit.eu](mailto:manchester@werit.eu)  
PL-55-330 **Błonie gm. Miękina**, ul. Zachodnia 2, Phone +48 71 3362595, [werit@werit.pl](mailto:werit@werit.pl)  
CZ-61900 **Brno – Horní Heršpice**, Pražákova 661/36a, Phone +42 770 694 004, [werit@werit.cz](mailto:werit@werit.cz)  
[www.werit.eu](http://www.werit.eu)



Packaging Technology